



BASE Guide To Spain

3rd Edition. 2016

Richi Navarro - David Fusté

Translated by: Javier HeavyAir Ortiz

info.aesbase@gmail.com



DANGER!!!

No reason for legal suit; you are the only one at fault



WARNING

BASE jumping is a high risk sport!

The technical information in this document is purely informational and while it can contribute to minimizing risk it does not eliminate it.

AESBASE and the authors of this document do not assume responsibility for personal injury or damage to objects as a result of appropriate or inappropriate use of the information contained in this document.

The information in this document is not exact, be it errors by the authors or changes in the geography of the land. It is totally the users responsibility to adequately verify the information within.



DANGER!!!

No reason for legal suit; you are the only one at fault

Index

INDEX	2
<hr/>	
ANDALUCÍA	8
CÁDIZ	9
SALTO DEL CABRERO	11
CÓRDOBA	13
BERMEJO	14
GRANADA	16
LA CANAL	17
VÍA ORIÓN	19
RELACIÓN CON EL AIRE	22
SPANISH YOGA	24
MÁLAGA	25
PEÑA DE LOS ENAMORADOS	26
CHILAM BALAM	27
DESPLOMILANDIA	29
EL TORCAL	31
LA VIDA ES AHORA	33
VERTICALANDIA	35
CAMINITO DEL REY	37
TAJO DE LA MADERA	39
ALFARNATE	41
ARCHIDONA	43
EL BUNKER	45
METECAÑA	47
POEMA ROCA	49
TAJO DEL MEDIO DÍA	51
SIERRA NEVADA	53
VELETA	54
<hr/>	
ARAGÓN	55
AINSA	56
MOSQUETEROS	57
CASTILLO MAYOR	58
ANSÓ	61
PEÑA EZKAURRE	62
BALLOBAR	63
BALLOBAR TOWER	64
CASTEJÓN DE SOS	65
CAZALUS	66
GUARA	68
LA CUCA DE BELLOSTAS	69
LAS VENTANAS DEL MASCÚN	71
TOZAL DEL VERO	72
CIENFUENS	73
JARABA	74
LA RINCONADA	75
VALLE DE HECHO	77
CHIPETA	78
LOS MALLOS DE AGÜERO	79

PEÑA SOLA	80
LOS MALLOS DE RIGLOS	81
VISERA	82
PISÓN	83
FIRE	85
PURO	87
CUCHILLO	89
TRONO	91
PEÑA RUEBA	92
PEÑA RUEBA	93
ORDESA	94
SAN ANTÓN	95
TOZAL DEL MALLO	96
LIBRO ABIERTO	98
ESPOLÓN DEL GALLINERO	99
FAJA DE LAS FLORES	100
ESKORIA	101
XURRA	102
FRAUCATA	103
COLADA DE CABALLO	104
JACA	105
PEÑA RÁPITA	106
ASTURIAS	107
PICOS DE EUROPA	108
NARANJO DE BULNES	109
PEÑA OLVIDADA	110
PEÑA REMOÑA	111
TORNOS	112
CUETO DAVE	113
RUTA DEL CARES	114
TEVERGA	116
DIXEBRA-VALLESPÍ	117
CANARIAS	118
TENERIFE	119
LOS GIGANTES	120
CATALUNYA	122
ALT URGELL	123
TR LLEIDA	124
BÓIXOLS	126
FRANC	128
CAFÈ DAVID	130
BASE TENEBROSUM	131
VÍA FERRATA	133
PI MICO	135
NARGÓ	137
VALLDAN	139
CABÓ	140
ROC DEL RUMBAU	141
ARTESA DE SEGRE	143

SALGAR	144
CLUA	147
BENAVENT DE LA CONCA	149
TAIS ROC	150
CAMARASA	153
XAXO	154
JUMP HUNTER	157
BOLITA	158
NAVARROS	160
COLLEGATS	162
TRIDENT	163
KALIMERA	165
PARET DE LA REPRESSA	167
EL SERRADELL	168
PALOMERA	169
BROS	171
SERRADELL	173
EL DOLL	175
CABRETA	176
MONTREBEI	178
ARAGÓN	180
VOLTOR	183
CATALUNYA	184
MAR'S PLACE	186
SHELL	188
TORRE ROJA	189
RENEE'S PLACE	191
MONTROIG	192
MONTROIG	193
MONTSANT	194
EL RACÓ DE MISSA	195
LA FALCONERA	198
MONTSERRAT	200
PARET DE L'AERI	201
DIABLES	202
CAVALL BERNAT OLD	203
CAVALL BERNAT NEW	204
CHANA'S EXIT	206
AGRIDULCE	208
PICH EXIT	210
FRARE GROS	212
PEDRAFORCA	213
GRESOLET	214
SANT LLORENÇ DE MONTGAI	215
CILINDRE	216
SANLLOR	219
SERRA DE BOUMORT	220
PESSONONE	221
SERRA DE BUSA	222
BUSA	223
SERRA DE SANT GERVÀS	225
SANT GERVÀS	226
SIURANA	228
SALT DE LA REINA MORA	229

SIURANELLA	230
CECI	232
TAVERTET	233
TAVERTET	234
TERRADETS	235
AMANITA	236
GASPATXO	237
VILANOVA DE MEIÀ	239
ROCA DELS ARCS	240
ROCA ALTA	242
HERMES	243
PAS NOU	244
PILAR DEL SEGRE	245
SOLO ANSIA	246
PINA MONA	247
PARET DEL TEMPS	248
COVA DE LES MONGES	249
ZARATHUSTRA	250
H.E.U.R.A	251
PARET DELS ATACS	252
PÒTUL	253
RÚBIES	255
PAÍS VASCO	257
<hr/>	
RANERO	258
BALCÓN DEL DURDUZ	259
ARMINTZA	260
EL POINT	261
VAMOS A LA PLAYA	263
ATXARTE	264
BALCÓN DE ANDRÓMEDA	265
LABARGORRI	267
IONDEGORTA	269
5 SEGUNDOS	270
SIERRA DE SÁLVADA	272
LE CHANT DU VAUTOUR	273
NERVIÓN (AEROPOLIS)	274
SALTO DEL LOCO (AEROPOLIS)	276
UNGINO	277
PÍKARO	280
ARO KE SI	282
VALENCIA	283
<hr/>	
CALPE	284
IFACH NORTE	285
PEÑÓN DE IFACH	286
PETRER	287
CID	288
TEULADA	289
MORAIRA	290
CHULILLA	292
CHULILLO	293

OUT OF SPAIN	295
FRANCE	296
BIOGRAPHIE	297
GREECE	298
CORAZÓN DE LEÓN	299

Andalucía



Cádiz



Salto del Cabrero

Exit opened in October 2016 by Éder Navacerrada with the help of Miguel, Ana and Tere in the Sierra de Grazalema.

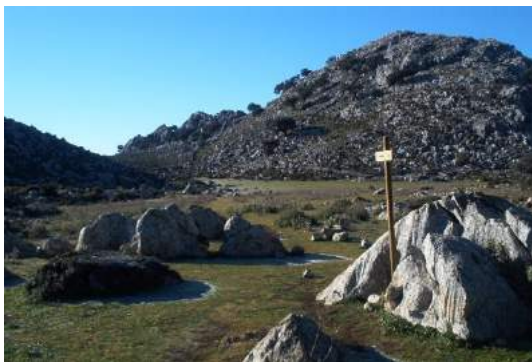


Access

Park in the town of Benaocaz.

Approach

Take a goat trail from the town of Benaocaz. 1h traverse on a gentle slope with some wide open areas. When you get to the last section, instead of following the signs to the left, continue straight leaving the highest peak to your left (photo 1). Ascend the field with a 130-165ft (40-50m) incline, until you get to the top, always leaving the highest peak to your left (photo 2) – standing at the exit looking left.



Material

None.

Height

280ft (85m) to impact.

Landing

The landing is in the middle of a rocky valley. It is a small patch of grass about 33ft (10m) in diameter surrounded by goat trails, rocks and oak trees on a gentle slope. A large fallen oak marks the landing area.



Return

Its about 30 min by foot to get near the closest area next to the exit point.

Observations

It is highly recommended that you walk the landing site before jumping, because it's technical and there is little margin for error.

Córdoba



Bermejo

Exit opened in January 2015 by Juan Arenas and Jonathan Trango. In the natural park “Sierras Subbéticas”.



Access

From Rute, continue route A-3226, about 20km more or less, until you see the wall to your right. There is a narrow road that continues on several kilometers, park there.

Approach

Hike towards the mountain and ascend up a ditch that is very visible towards the right.

Material

There are several positive shelves at the exit. We tied a rope to a tree to get down several meters and later retrieved it.

Height

430ft (130m) to impact.

Landing

Good landing below.

Return

?



Observations

Several positive shelves at the exit and the wall is semi-circular. Better to have a good push to clear the shelves and in the correct direction.

Granada



La Canal

Exit opened in June 2015 by Jonathan Trango



Access

Motril

Approach

Easily following the wall from the right (30min)

Material

?

Height

170m (558ft) to impact. 50m (164ft) of talus.

Landing



Return

?

Observations

Nice overhang and easy landing

Vía Orión

Exit opened in April 2015 by Éder Navacerrada



Access

Motril.

Approach

15min by foot from where you park the car. Maintenance road for an antenna before you get the antenna on the left.

Material

?

Height

170m (558ft) to impact. 50m (164ft) of talus.

Landing



Return

?

Observations

You need to push hard on the exit to clear a little outcropping near the top, the rest is overhung or vertical, but not obvious. Minimum 2 second delay. Landing is easy.

Relación con el Aire

Exit opened in February 2016 by Jonathan Trango. Beautiful jump located in front of the wall of Escalante and behind Orion.



Access

From the coastal road of Málaga – Motril, take route N-323 towards Granada. The road takes you thru the Los Vados canyon, where you will see the wall on the left beyond the first hard curve to the right. After crossing the river the landing area will be visible below the wall.

Approach

You can reach the top by car (about 30 min on a small road), where it leaves a short downhill 15 min walk on an unused trail. You will need a shuttle driver.

Material

None.

Height

425ft (130m) to impact.

Landing

Very beautiful in a clearing among the avocado trees.



Return

?

Observations

Nice overhand and beautiful landing.

Spanish Yoga

Exit opened in August 2015 by Anaconda, Cristian Andersen, Eder Navacerrada and Jonathan Trango. Exit located on the Escalante wall. At the moment it is the highest wall in Andalucía, and at the same time the first and only wingsuit (Eder Navacerrada) jump and tracking (Cristian Andersen) jump.



Access

From the coastal road of Málaga – Motril, take route N-323 towards Granada. The road takes you thru the Los Vados canyon, where you will see the wall on the left beyond the first hard curve to the right. Park below the wall.

Approach

Take the path that heads up to the left of the wall, pass by a house with lots of dogs. At some point the path ends, but continue straight ahead. Surrounding the wall to the left. You will find many possible exits, but the best one is a comfortable rock ramp before the peak, which is still a bit further.

Material

None.

Height

750ft (230m) to impact. 650ft (200m) of talus.

Landing

Very good landing area next to the river.

Return

?

Observations

Nice overhang. Beautiful and recommended.

Málaga



Peña de los Enamorados

Exit opened by Éder Navacerrada and Tony Mad in February 2013.



Access

The mountain forms the profile of an Indian face. Take route A-354 from Antequera towards Archidona. The road is parallel to the railroad track and passes by the jumpable wall. The wall faces northeast (the Indian's chin) and the trailhead is at the foot of the southeast face (the Indian's forehead).

Approach

Parking is on the roadside at the widest point next to the river valley. Use as a reference an abandoned mine next to a vertical limestone wall that's on the other side of the railroad track. Cross the river. There is no bridge, but you can usually cross over on a fallen tree. At a later time, cross the train track (be careful, there is a blind curve) and hop a livestock fence (there are feral goats all over). The area may be private or part of a park because of the fence. All of the approach is a walk up.

Material

10 meter (33ft) rappelling rope recommended, unless you are familiar with the exit.

Height

Approximately 115m (380ft) to impact and 200m (655ft) to the landing.

Landing

Rectangular open field in front, a bit to the left of the exit.

Return

Skirt the mount to the north. There are lots of unmarked trails at the top, but become wider towards the end. Look for the train track and abandoned mine.

Observations

Vertical jump, overhung on the last third, landing area very good.

Chilam Balam

Exit opened in May 2015 by Eder Navacerrada and Jonathan Trango.



Access

Villanueva del Rosario.

Approach

Parking near the olive trees. Walk up along the Wall to the left. (25min)

Material

?

Height

75m (246ft) to impact. 100m (328ft) of talus.

Landing



Return

?

Observations

Exit platform is rocky and uneven. Big overhang and steep talus. Thorny plants surround the landing area.

Desplomilandia

Exit opened in May 2015 by Eder Navacerrada and Jonathan Trango.



Access

Guadalhorce dams

Approach

Park at the para-glider launch site. Walk up between the two walls. (30min)

Material

?

Height

135m (443ft) to impact. 150m (492ft) of talus.

Landing



Return

?

Observations

Take a short delay to make it to the main landing area. A longer delay will leave you aiming for a narrow path.

El Torcal

Exit opened in February 2015 by Eder Navacerrada and Jonathan Trango.



Access

Villanueva de la Concepción.

Approach

Look for a turn left on the wall, reach the gully, and from there a labyrinth of rock formations will take you to the exit. (40min)

Material

?

Height

140m (460ft) to impact. 50m (164ft) of talus.

Landing



Return

?

Observations

Easy exit and good landing.

La vida es ahora

Exit opened in May 2015 by Eder Navacerrada and Jonathan Trango.



Access

The town of Alfarnatejo

Approach

Nice parking among the olive trees. Walk the path that goes around the mountain on the right (East). Cross a small creek surrounded by thorny bushes. (45min)

Material

?

Height

140m (460ft) to impact. 50m (164ft) of talus.

Landing

?



Return

?

Observations

Easy exit but you must clear several positive outcroppings at 10m and 40m.
Recommend a hard push and minimum 2 second delay.

Verticalandia

Exit opened in June 2015 by Jonathan Trango



Access

Guadalhorce dams

Approach

Park at the para-glider launch. Hike up in between the two walls (30min).

Material

?

Height

110m (360ft) to impact. 150m (492ft) of talus.

Landing



Return

?

Observations

Hard push off recommended. Land on trail.

Caminito del Rey

Exit opened in July 2015 by Jonathan Trango



Access

The town of El Chorro.

Approach

Use the El Mirador restaurant parking lot. Hike towards the caminito del rey trail, then take the right fork that takes you up to the exit. (40min)

Material

?

Height

120m to impact. Positive outcropping at 60m. Talus: 100m

Landing



Return

To get out, take caminito del rey trail to the second canyon, and before the guard shack, go up towards the left to return to the path. Smile to the cameras.

Observations

There are other exits nearby, but with less altitude to impact. Tight landing. Wind currents are common thru the canyons. Verify good landing conditions below.

Tajo de la Madera

Exit opened in May 2015 by Eder Navacerrada and Jonathan Trango



Access

Villanueva del Rosario.

Approach

Park near the local farmhouse. Hike up along the wall to the left. (45min)

Material

?

Height

85m (279ft) to impact. 50m (164ft) of talus.

Landing



Return

?

Observations

Easy exit, shelf at 25m. Hard push off recommended. Land between the olive trees.

Alfarnate

Exit opened in July 2016 by Jonathan Trango in a wall atop the town of Alfarnate.



Access

From Alfarnate take route MA-156, and turn left into the single lane, that later reaches the wall that is northeast of town. Park beneath the wall.

Approach

Hike up until you are more or less below the exit. From there take a path that traverses the wall to the left. There is some scrambling required but no climbing gear necessary. Once atop, follow the crest to the right and you will find the exit point.

Material

None.

Height

295ft (90m) to impact.

Landing

Good landing on the road or in the fields below.



Return

?

Observations

The upper part of the wall is overhung, but about 50m down there are some positive shelves. Keep that in mind. There are also some positive ridges to the left that are close. 90° off heading to the left is not recommended.

Archidona

Exit opened in November 2015 by Eder Navacerrada, Jonathan Trango and Saulo Fortuna. Jump located in the large cave of Archidona, famous rock climbing school.



Access

From the A-92 (Sevilla-Granada) highway, take the exit to route A-7201. Take this route to the town and at about 100m take the left fork in the road. Then take a sharp turn to the left and park under the cave.

Approach

Hike up and around the left side of the mountain. You will have to walk along a sharp edge and then climb down to the top of a large overhang.

Material

None to reach the exit point. But if you choose to static line, you will need some form of anchor.

Height

200ft (60m) to impact.

Landing

Tight landing and in the largest opening in the olive grove, with caution and little altitude to play around.



Return
?

Observations

This jump is adequate for static line, but there are no anchors at the exit. We have used ropes tied to bushes and later retrieved them.

El Bunker

Exit opened in July 2016 by Jonathan Trango located on the wall near the port of los Alazores. Between Alfarnate and Villanueva del Trabuco. At the base of the wall are the ruins of a Spanish civil war bunker.



Access

From the Venta Puerto de los Alazores, the wall is visible to the south. Park on the road below the wall.

Approach

Ascend walking around the wall to the right. You do not ascend to the peak. The exit point is atop a red vertical pillar. The wall is completely vertical with some positive outcroppings. It has been rappelled 10 meters to get to the most positive part of the wall. You can exit from much higher, but be aware that you will be opening close to the wall.

Material

None or 65ft (20m) rappelling rope.

Height

310ft (95m) to impact.

Landing

There is a large open field below, but it is full of rocks. The road is better, it's easier and there is usually no traffic.



Return

?

Observations

The wall is positive on both sides. Decide your exit direction and push hard.

Metecaña

Exit opened in October 2015 by Jonathan Trango in el Chorro, Málaga. Not a recommended jump, located atop the “Metecaña” climbing area, between two other exits: Desplomilandia and Verticalandia. Exposed climb down, low height, positive wall and tight landing area.



Access

From the Guadalhorce reservoir, take the road to Antequera. You will reach a two-lane junction in front the Desplomilandia climbing area. Continue up the lane until you pass under the large wall. Then turn right to park in the paragliding launch next to Tajo del Cabrito.

Approach

From the parking hike up, taking the col between the two walls until you reach a corner. From there you climb down a steep grade (more difficult than it looks), and rappel to reach the positive part of the wall.

Material

Exposed descent or 65ft (20m) of rope for rappel.

Height

230ft (70m) to impact.

Landing

Land next to the car at the paraglide launch. If you don't reach it, you will have to climb down or improvise.



Return

?

Observations

The wall is positive to the right and the landing is barely makeable.

Poema Roca

Exit opened in July 2015 by Jonathan Trango. Beautiful and emblematic jump, because you fly along the largest and most famous wall Chorro. Quite visible from the town below.



Access

Park the car below the “Escalera Árabe” climbing area.

Approach

From there you ascend the steps and continue until you are almost at the peak of the “Frontales” wall. Then you need to make two 165ft (50m) rappels to access a large shelf atop large overhangs.

Material

Two 200ft (60m) ropes, and rappelling gear. There is some planning necessary to retrieve the rappelling gear. Therefore you must throw the ropes down or have someone to carry them down or jump with them. You can also climb down a steep grade without rope, in which case you don't need rope or any other gear.

Height

460ft (140m) to impact.

Landing

On a hairpin curve in a pine forest. Make sure the conditions are right.



Return

?

Observations

Large overhang and plenty of height, but the landing is tight.

Tajo del Medio Día

Exit opened in May 2016 by Jonathan Trango. A nice wide wall located above a beautiful forest. It can be seen clearly from the Málaga – Granada highway.



Access

From Villanueva del Trabuco, take route MA-4100, and quickly turn right on a ramp towards the mountain to the southeast, that ends in Alfarnate. After a few kilometers you will see a forest below the talus, then turn left to park in the landing area.

Approach

Hike up (1300ft - 400m slope), surrounding the wall to the right, until you reach the exit point.

Material

None.

Height

230ft (70m) to impact.

Landing

Good. In a clearing in the olive groves.



Return

None.

Observations

Low jump and positive wall. There are two possible exit points. One is 200ft (60m) with a little more overhang and the other is 230ft (70m) with a little bit of positive wall. Be careful, there is little margin for error on this jump.

Sierra Nevada



Veleta

Exits opened to the north of Veleta. The first exit was opened by Àlex Txicon, Patrick Guisasola and Dario Barrio (yellow arrow). The second exit (High Veleta) was opened by Jonathan Trango in April 2016 (red arrow).



Access

?

Approach

Winter access: 2 hour hike in snow and ice. 2600ft (800m) slope, cold, altitude, etc. Anchor in the snow or rock to rappel. Jump with crampons. Great landing in the snow.

Summer access: easy, but landing is tight with lots of large boulders and rocks.

Material

Gear for 50ft (15m) rappel.

Height

Approximately 425ft (130m).

Landing

In the summer the landing is not good with lots of rocks. In the winter the landing is great in the snow.

Return

?

Observations

The summers have bad landings and the winter has bad access. Take your pick.

Aragón



Ainsa



Mosqueteros

The BASE jump is on the north face of Peña Montañesa. The first attempt to open this point was in July 2009 with Enrique, Richi and Emilio. They found the site with the help of Carlos Manuel, but the weather did not allow the jump. A month later, on August 23, 2009, Richi, Emilio and Hubert opened the site.



Access

?

Approach

Approximately one and a half hours from the left slope of the jump face (facing the wall).

Material

None.

Height

Approximately 250m (820ft), with a 1000m (3280ft) ramp to the landing.

Landing

Any of the open fields at the end of the valley, next to the access trail.

Return

Shuttle a car or have driver waiting at the landing area.

Observations

While this is a tracking suit jump, the talus is not steep enough to get a good flight.

Castillo Mayor

The BASE jump is located on the north wall of Castillo Mayor (Aínsa). The first jump from the highest point was realized by Erich Beaud and Laurent Pechberty on July 18, 2002. Enrique and Hubert opened the other exit point on October 10, 2007 and the second Spanish expedition was formed by Emilio, Richi, Toni and Arturo to find the second exit point another 50 meters ahead. This happened on July 30, 2011.

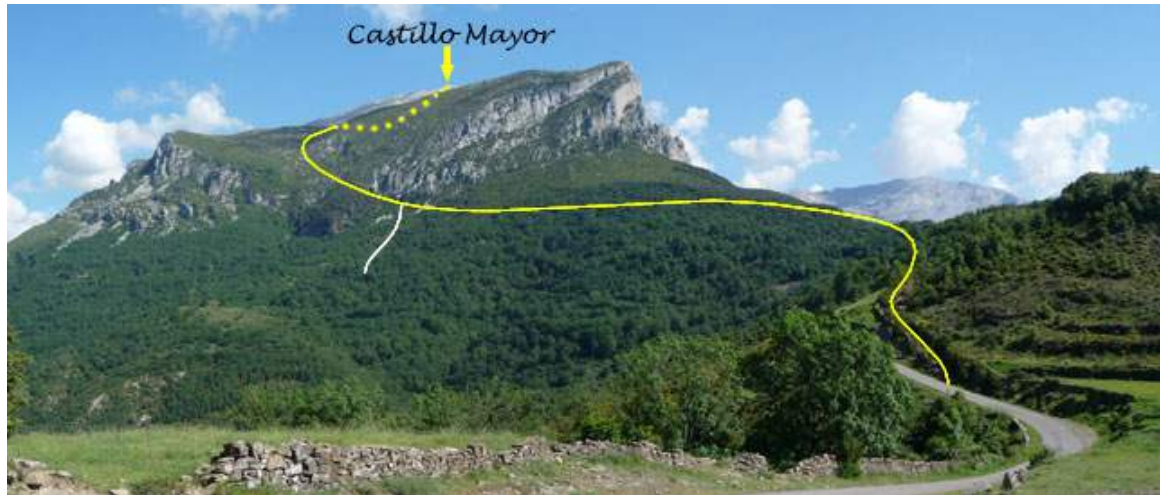


Access

Coming up from Aínsa, in Escalona take the left route indicated towards Fanlo, Garganta de Escuaín, Cañon de Añisclo, Valle de Vió and immediately veer uphill towards the right to Puértolas and Escuaín.

Drive slowly because the road is narrow with lots of steep drops, which can be a problem with oncoming traffic.

After half a kilometer past the town of Puértolas, or 8km before Escalona, there is a fork in the road. To the left Bestué and the right Escuaí where the landing site is located. You can leave the car there. The marked trail starts about 100m in the direction of Bestué, you can start here or if you have a non-jumping driver, you can start approximately 1km further (500m in the direction of Bestué there is another trail towards the right and after another 500m starts the trail drawn in white that joins the main trail).



Trailhead and shortcut

Approach

Begin at the trail (among many of the choices which are well marked with stones). The ascent is easy. In about 2 hours (or a little over an hour using the shortcut) you will arrive at the open area of Castillo Mayor (it is a large prairie) and from here the exit is about 30 minutes.

Exit approx: 42°34'31.34"N 0°7'55.33"E

Material

None.

Height

Approximately 230m (755ft), with more than 400m (1315ft) ramp to the landing.

Landing

The landing area is visible from the exit to the right. It is the side of the road where there is a water trough. It is long and narrow (avoid the water trough). If you shuttle a car at this location you can save yourself a 3km walk back to the fork.



Landing

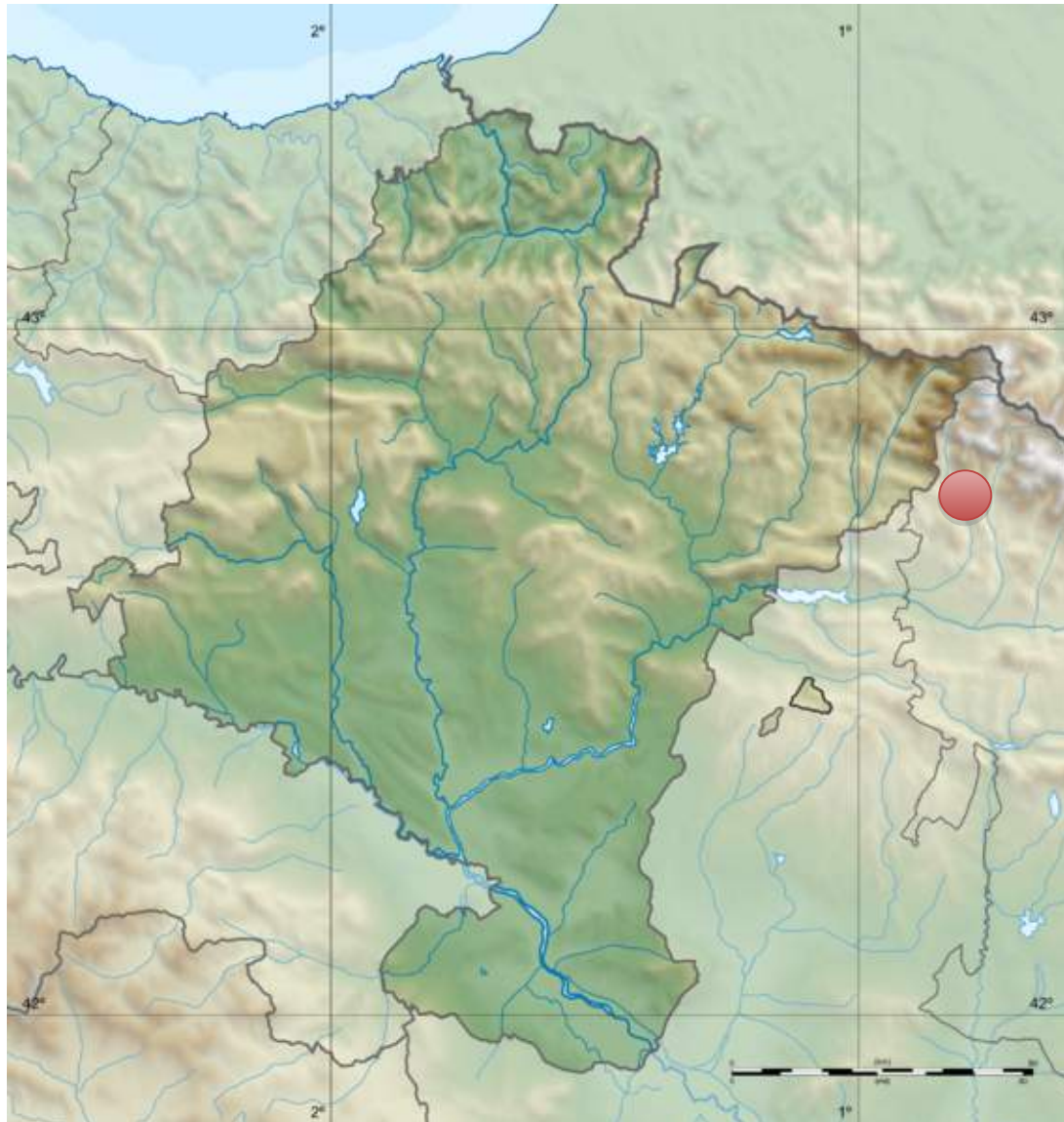
Return

None or walk about 3km south down the road where the car is parked.

Observations

It is advised to shuttle a second car or have a non-jumping driver.

Ansó



Peña Ezkaurre

Exit opened by Richi Navarro, Turko Ortiz, Óscar Cacho and Mireia Miró in June 2014.



Access

?

Approach

?

Material

None. There is a rope at the exit.

Height

180m (590ft).

Landing

In a small field next to the road and where you park.

Return

You will land next to the car.

Observations

Slightly overhung exit.

Ballobar





Ballobar Tower

BASE Exit opened by Luís Alonso and Oscar Cacho. **It is illegal to BASE jump here due to the protection of local bird species.**



Access

Park on the left shoulder of the road a few meters before the town of Ballobar in the direction from Lleida.

Approach

Ascend the left side of the wall following the terrain. There is no trail.

Material

None.

Height

Approximately 328ft. (100 meters).

Landing

At the base of the wall on the side of the road.

Return

None.

Observations

Beautiful sandstone wall.

Castejón de Sos



Cazalus

The BASE jump is located between Chía and el Run (Huesca). Opened by Lilian Robert on October 28, 2000.



Access

From Castejón de Sos in the direction of Benasque head towards the town of Chía and before you arrive in the town take a road towards the left that heads downward and joins Benasque Baja road. The road becomes a forestry access road (for vehicles with high clearance or 4x4) and it ascends. At about 2km you are on top of the face of Sol (there is a livestock fence on the way to the exit).

Approach

2 minute walk from the access road to the exit (You can't miss the exit point, there is a rock in the form of a diving board).

Material

None.

Height

Approximately 80m (260ft) with about 400m (1315ft) ramp to the landing.

Landing

The landing area (directly in front of the exit) is in large open areas of El Run (the town next to Castejón de Sos). Next to the open areas is a hostel and activity center. Be aware that there is a high power line that can be avoided with altitude, but you have any problems there are alternate landing areas before the power lines.



Shelter and landing area in the background meadows

Return

There is none if shuttling cars or if you have a non-jumping driver, otherwise its not possible.

Observations

It is advised to shuttle a second car or have a non-jumping driver. The road from Chía to Pared del Sol is not good for normal vehicles (preferably 4x4 or high clearance vehicles).

Guara



La Cuca de Bellostas

Exit opened by Richi Navarro and Óscar Cacho in September 2013.



Access

Parking is in the town of Rodellar.

Approach

Walk up toward the Mascún ravine and in about an hour La Cuca comes into sight. To access the top, climb one of multiple lines, the easiest being a grade 6a.

Material

Climbing gear. Depends on which line you choose.

Height

Approximately 80m (260ft), with a little more to the landing.

Landing

Very tight landing in between trees at the end of the ravine. A quarry (about 30 degree incline) is an alternative.



Landing area in the ravine and quarries

Return

The same way you walk up.

Observations

Low jump with tight landing area. The exit point is also very tight, with little room to gear up for two people. There is a fixed rope at the exit. **(If there is a lot of water flowing there is little to no landing area).**

Las Ventanas del Mascún

Exit opened by Óscar Cacho and David Fusté in May 2016.



Access

Park in the town of Rodellar.

Approach

Start walking towards the Mascún ravine until you get the foot of Hasta las Ventanas. To get to the top it's a short scramble up the left side of the wall.

Material

None.

Height

140ft. (42m).

Landing

This is a precision landing in the ravine.

Return

The same way you came to the ravine.

Observations

Very well overhung exit, but the landing is a bit complicated due to the size of the area necessary to maneuver.

Tozal del Vero

Exit opened by Richi Navarro and Óscar Cacho in January 2014.



Access

?

Approach

?

Material

10 meter rope to get down to the exit point.

Height

Approximately 230m (755ft).

Landing

Straight in front of the exit point, crossing the river, where you will have to fend for your life.

Return

?

Observations

Slider down opening will give you more landing possibilities.

Cienfuens

Exit opened by Richi Navarro, Óscar Cacho, Turko Ortiz and David Fusté with the help of Àngela Riba in May 2014.



Access

Access the trail from the same parking lot of the Cienfuens refuge, behind the Wall.

Approach

There is no trail. Hike up along the ridgeline leading up to the Wall.

Material

A small bit of rope about 10 meters long to get down to the exit.

Height

Approximatlely 180m (590ft).

Landing

There is a narrow path along side the dam.

Return

The same narrow path, towards the left, you will find steps around the same level as the dam. Head towards the parking lot.

Observations

Incredible solitary jump location.

Jaraba



La Rinconada

First exit opened by a small rock climbing school in the province of Zaragoza.
Opened on 27 August 2016 by Luis Alonso, Laura Fernández and Adrián M Roig.



Access

Go thru the town of Jaraba towards the hot springs. Past the hot springs and 700 meters past a bottling plant you will reach a well-indicated curve at the base of the overhung wall of Peña Palomera. There is a detour to Santuario de la Virgen de Jaraba. Front and center you will see the La Rinconada wall. Park on the side of the road near the base of the wall.

Approach

From the base of the wall take a poorly marked trail that ascends up a ditch on the left. When the ditch ends, continue along the edge of the wall towards the right until you reach the exit point marked by a cairn. The exit point is an easily recognizable overhung protrusion on the vertical Vía Limitón. 15/20 minutes.

Material

None.

Height

Approximately 295ft (90m).

Landing

On the road towards the right. There is little traffic, but you still have to be aware of occasional vehicles.

Return

You land next to the car.

Observations

Overhung exit. There are vulture and other bird nests in the area. We are not aware of any restrictions, but better to avoid nesting season (approximately 15 January to 15 June).

Valle de Hecho



Chipeta

Exit opened by Turko Ortiz and David Fusté in Monte Chipeta in August 2014.



Access

From Jaca, head towards Valle de Hecho, follow the route until you get to the parking lot at the Monte Chipeta trailhead, behind the wall.

Approach

Take the path up to Monte Chipeta, until you get the edge of the wall.

Material

Nothing, however there is a class IV climb to access the exit. If you are not comfortable with this, take some rope to help climb down. (it is difficult to tie a rope that is secure, because there are no trees, unless you bring climbing gear).

Height

Approximately 140m (460ft).

Landing

In the prairies to the left of the jump.

Return

Return to the hill and head in the direction where the car is parked staying at the same altitude, once you've crossed over to the next valley, head downward along the path you came up.

Observations

Overhung exit with good landing. Be aware of rotors that form at the base of the wall when tail winds are present.

Los Mallos de Agüero



Peña Sola

Exit opened by Julien Caquineau in February 2001, then again by Oscar Cacho and Richi Navarro in June 2013



Access

The town of Agüero

Approach

Path that crosses the town towards the peak (climbing lines)

Material

Climbing gear

Height

150m (490ft).

Landing

Open areas to the left of the jump.

Return

Walk back to the car.

Observations

Slider down.

Los Mallos de Riglos



Visera

Exit opened by Erich Beaud and Dominique Gleizes on March 6, 1990.



Access

Park in the town of Riglos.

Approach

There are two ways up. One route is to take the summer circus area (to the left of the wall); the walk is longer but easier, about an hour. The other is directly to the right of the wall, through a channel where climbers tend to descend. This route is shorter, about 45 minutes, but more intense.

Material

None.

Height

Approximately 190m (620ft).

Landing

There are many alternatives. On the knoll directly to the front there are two small fields, one for slider down and the other for slider up.

Return

Walk back to the town.

Observations

Large overhung jump, but it's not good for a first wall jump. Slider up landing is not good and a slider up, 4-second delay is not advisable. Jumping slider down you can land in the big field close to the bus parking of the village.

Pisón

300m BASE jump, located at Mayos de Riglos (Huesca), opened by Sam Beaugey and André Pierre Rhem in December 1990.



Access

Park in the town of Riglos.

Approach

The only way to get to the top is to climb one of its routes. The easiest and recommended is Espolón de Adamelo (V+).

Material

Climbing gear.

Height

Approximately 300m (980ft).

Landing

In the same direction of the jump, looking towards the river and a few meters from the path at the base, there are 3 parallel clear fields available to land. There are other alternatives that require commitment.

Return

Walk back to the town of Riglos.

Observations

Possibly one of the best jumps in Riglos. Overhung exit with very good landing area.

Fire

Exit opened by Julien Caquineau in April 2001.



Access

Park in the town of Riglos.

Approach

Take the climber descent route. Climbing gear is needed to climb a large IV+ route just before the peak. There is another exit point on the right peak. About a 15m climb from the pass towards the right. This peak is more exposed due to its verticality and because the fall runs very close to the wall.

Material

Climbing gear.

Height

Approximately 270m (885ft).

Landing

Same as Pisón.

Return

Walk back to the town of Riglos.

Observations

Not as overhung or as tall as Pisón.

Puro

Exit opened by Julien Caquineau in February 2001



Access

Park in the town of Riglos.

Approach

Climbing any of its routes, the easiest and recommended being route Normal (6b). The exit is a few meters below the peak. No need to get to the peak, otherwise you need to rappel down. Be careful not to mistake the exit, there are many possibilities, some with pronounced outcroppings below the jump.

Material

Climbing gear.

Height

Approximately 160m (525ft).

Landing

Same as Pisón.

Return

Walk back to the town of Riglos.

Observations

Jump slightly overhung with good landing area.

Cuchillo



Access

Park in the town of Riglos.

Approach

Hike along the back. Same access as Visera, then head for the upper back towards Cuchillo. Overcome one channel using a fixed chains, until you are on the back of Cuchillo, where you will have to rappel 30 meters.

Material

About 30 meters rappelling gear.

Height

Approximately 160m (525ft).

Landing

At the base.

Return

Walk back to the town of Riglos.

Observations

Vertical jump with difficult landing. Nice atmosphere because it feels like you're jumping on top of the town.

Trono

Exit opened by Carlos Suarez.



Access

Park in the town of Riglos.

Approach

Climb up Mosquitos route until you reach Trono (6a).

Material

Climbing gear.

Height

Approximately 160m (490ft).

Landing

The same as Visera, or at the base.

Return

Walk back to the town of Riglos.

Observations

Vertical jump with sketchy landing.

Peña Rueba



Peña Rueba

Exit opened by Oscar Cacho and David Fusté in April 2016.



Access

A few hundred meters past the town of Murillo de Gállego in the direction of Pamplona take a road towards the left. Continue on this road and park when it becomes too difficult to drive.

Approach

Once parked, continue on foot up to the end of the road, where you will find a small clearing. This is the landing area. From there take small path to the left in the direction of the wall, where you will flank the wall to the left and continuing towards the exit point taking a via ferrata.

Material

None.

Height

Approximately 328ft. (100m).

Landing

At the small clearing at the end of the road.

Return

Walk to the car.

Observations

Vertical wall that is positive to the left. Precision landing is necessary.

Ordesa





San Antón

This is a Natural Park where BASE jumping is prohibited.

Access

1km from Torla, in the direction of Ordesa National Park, next to San Anton campground.

Approach

Cross the river using the bridge next to the campground and follow the route to the right until the first intersection. Take the left path for about 500 meters, until you cross a small path, where you will take a left. Follow it to the peak. You will find the ruins of a cabin and you have to cross a small forest until you reach edge of the wall. There are 3 pitons below a small rockfall where you can rappel.

Material

40 meters rappelling gear.

Height

Approximately 200m (655ft).

Landing

Open fields next to the road are evident.

Return

Walk back to the car.

Observations

?



Tozal del Mallo

Exit opened by Fabrice Giovanetti, John Halford and Benoît Paquet in September 2004. **Because this is a Natural Park, BASE jumping is prohibited.**



Access

Depending on the time of year, you must park in the town of Torla (and take the bus to a parking lot in Ordesa) or you can drive directly to the Ordesa parking lot.

Approach

From the Ordesa parking lot, hike on the same road you drove up in and in about 500 meters, next to a small house, take the path that goes in the direction of Tozal del Mallo (perfectly visible).

Material

None

Height

Approximately 350m (1150ft).

Landing

There are diverse options, all of them good open fields.

Return

Walk to the car (or bus).

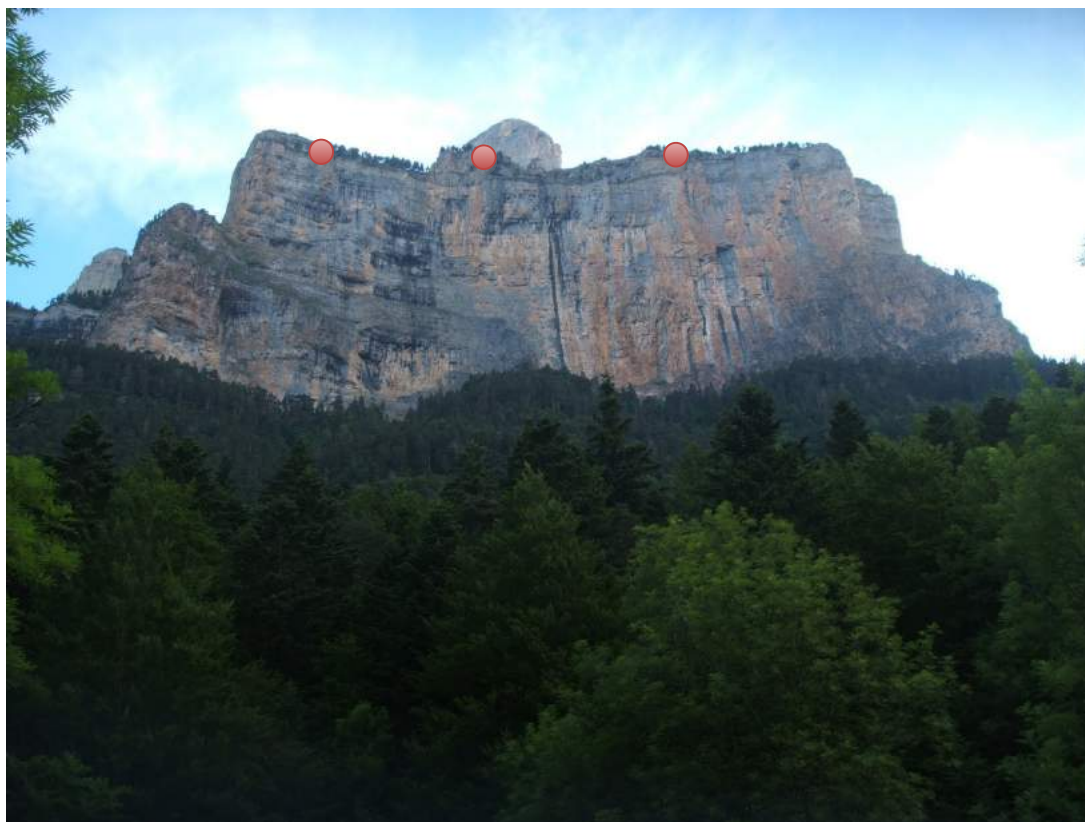
Observations

?



Libro Abierto

Exit opened by Erich Beaud and Dominique Gleizes on March 7, 1990. **Because this is a Natural Park, BASE jumping is prohibited.**



Access

From the Pradera de Ordesa.

Approach

?

Material

?

Height

Approximately 300m (985ft).

Landing

?

Return

?

Observations

?



Espolón del Gallinero

Exit opened by Lilian Robert on October 29, 2000. **Because this is a Natural Park, BASE jumping is prohibited.**



Access

From the Pradera de Ordesa.

Approach

?

Material

None.

Height

Approximately 300m (985ft).

Landing

?

Return

?

Observations

?



Faja de las Flores

Exit opened back to back with Eskoria by Oscar Cacho, Richi Navarro and Patrick Guisasola with help from Rafa and Nacho. **Because this is a Nature Park, base jumping is illegal in this area.**



Access

From the Pradera de Ordesa.

Approach

2h45'

Material

None.

Height

Approximately 140m (460ft). 860 meters (2820ft) to the landing.

Landing

Land on the talus at the base of the wall, sloped fields or in Eskoria.

Return

?

Observations

?



Eskoria

Exit opened back to back with Eskoria by Oscar Cacho, Richi Navarro and Patrick Guisasola with help from Rafa and Nacho. **Because this is a Nature Park, base jumping is illegal in this area.**



Access

From the Pradera de Ordesa.

Approach

2h

Material

None.

Height

Approximately 280 meters (918ft). 580 meters (1900ft) to the landing.

Landing

On the left side of the ravine (looking up at the wall) after Libro Abierto, land in the field where you started the approach.

Return

?

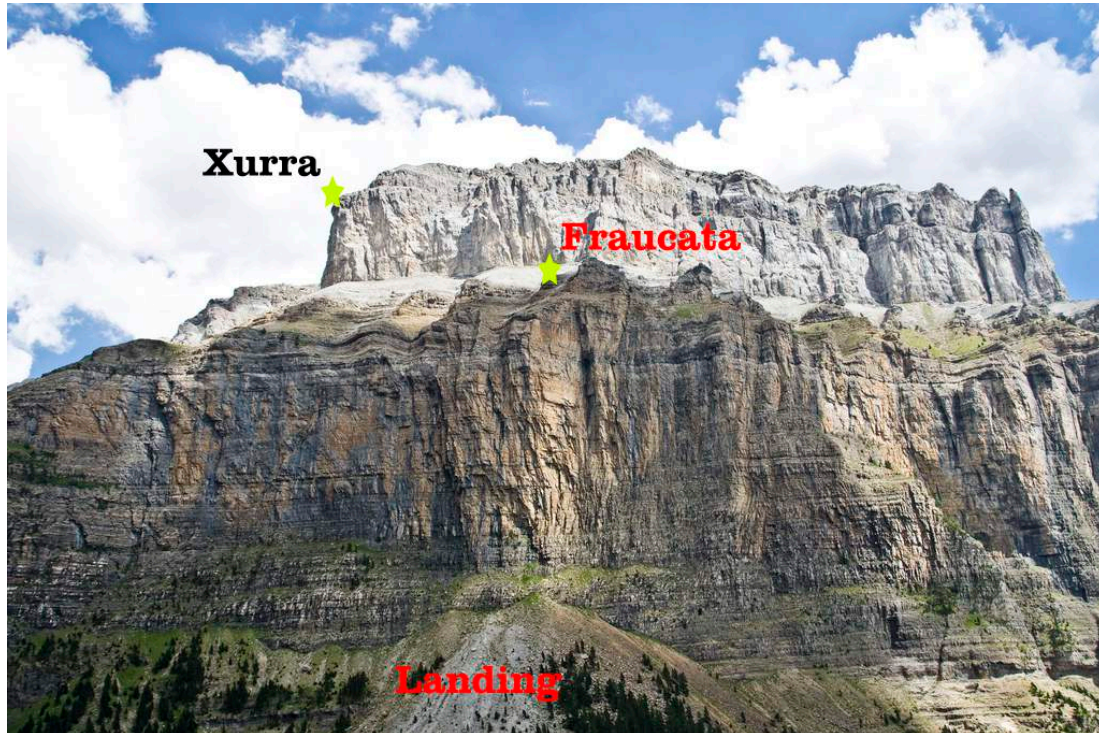
Observations

?



Xurra

Exit opened back to back with Fraucata by Oscar Cacho and Richi Navarro with help from Nacho and Raul. **Because this is a Nature Park, base jumping is illegal in this area.**



Access

From the Pradera de Ordesa.

Approach

Thru the cotatuero cascade, access the back of the wall.

Material

10 meters of rope to get down to the exit.

Height

Approximately 160 meters (525ft).

Landing

Land on the talus at the base of the wall, (large loose rocks) or in the same landing as Fraucata.

Return

?

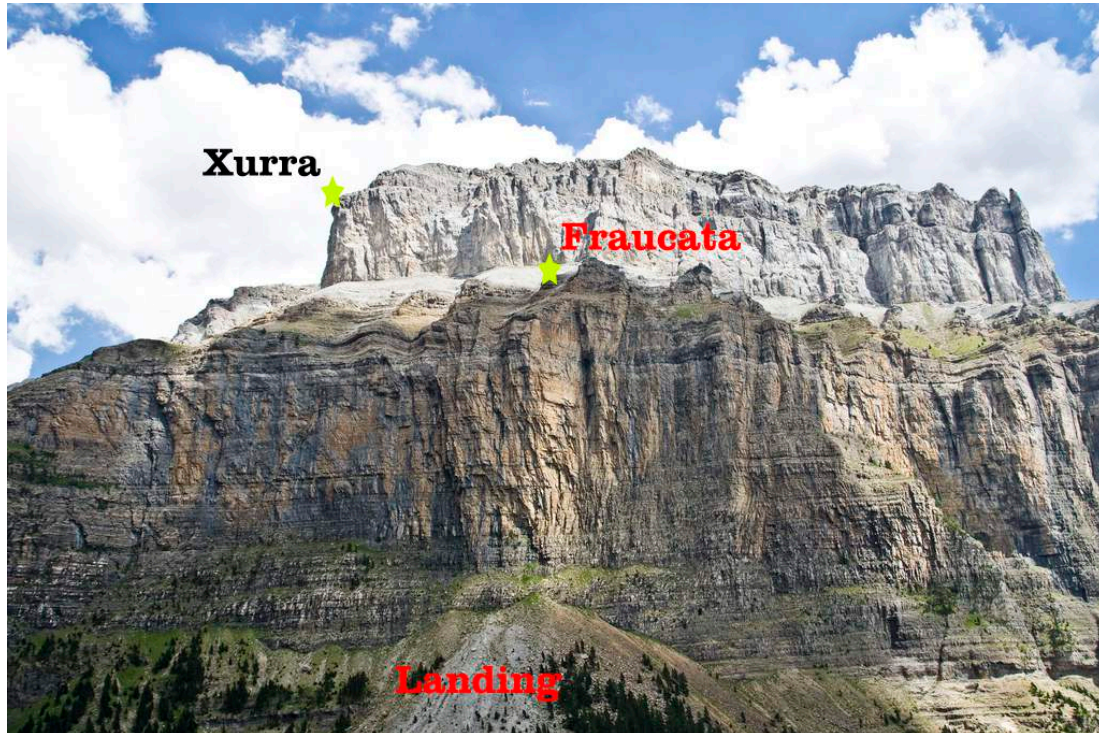
Observations

?



Fraucata

Exit opened back to back with Fraucata by Oscar Cacho, Richi Navarro and Alberto Rodriguez with help from Nacho and Raul. **Because this is a Nature Park, base jumping is illegal in this area.**



Access

From the Pradera de Ordesa.

Approach

Access thru the cotatuero cascade. 3h.

Material

10 meters of rope to climb down to the exit.

Height

Approximately 250 meters (820ft).

Landing

Land in talus rock quarry.

Return

?

Observations

The exit is an outcropping shelf that sticks out a few meters from the vertical wall.



Colada de Caballo

Exit opened by Mireia Miró and David Fusté. **Because this is a Nature Park, base jumping is illegal in this area.**



Access

From the Pradera de Ordesa.

Approach

Go up to the Goriz refuge, and from there go around to the left crossing the river until you reach the terraces in front of the Cola de Caballo.

Material

None.

Height

Approximately 160 meters (525ft).

Landing

The landing is in the Cola de Caballo field.

Return

Return to the Pradera de Ordesa via the approach trail.

Observations

Most famous and busy exit of Ordesa.

Jaca



Peña Rápita

Exit opened in 2014 by Alberto Rodríguez and Oscar Cacho.



Access

?

Approach

?

Material

?

Height

230 meters (755ft).

Landing

?

Return

?

Observations

?

Asturias



Picos de Europa



Naranjo de Bulnes

Jump is located on the central massif of the Picos de Europa. The Naranjo de Bulnes (in Asturian: Picu Urriellu) is situated on the Asturian Council of Cabrales and within the National Park of Picos de Europa. Opened by Leo Houlding in 2009 from a 100m high outcropping. The first spanish jumper to open it, from 300m higher, was Juan Ventura in August of 2009.



Access

The refuge is located at the base of the west face of Naranjo de Bulnes. Access is available via Bulnes or Fuente De.

Approach

There are various routes, all requiring climbing and rappelling.

Material

Climbing gear.

Height

Approximately 400m (1310ft).

Landing

In the fields next to the refuge.

Return

Using the same way into to the refuio.

Observations

?

Peña Olvidada

Exit opened by Carlos Suárez, impressive turret located in front of Peña Vieja and surrounded by vertical walls of around 300 meters.



Access

?

Approach

?

Material

?

Height

Approximately 180m (590ft).

Landing

?

Return

?

Observations

?

Peña Remoña

Exit opened by Carlos Suárez, situated on one of the walls of the tower nestled in the central massif of Picos de Europa. This tower is a huge outstanding limestone wall in the meadowlands of the glacial circuit of Fuente Dé.



Access

?

Approach

?

Material

?

Height

Approximately 160m (525ft).

Landing

?

Return

?

Observations

?

Tornos

Jump opened by Carlos Suárez.



Access

?

Approach

?

Material

?

Height

Approximately 140m (460ft).

Landing

?

Return

?

Observations

?

Cueto Dave

Jump opened by Carlos Suárez on June 25, 2011, situated in the Canal de Urdón (Hermida Pass or Desfiladero de la Hermida).



Access

?

Approach

?

Material

?

Height

Approximately 90m (295ft).

Landing

?

Return

?

Observations

?

Ruta del Cares

Exit opened on 15 August 2016 by Miguel Asturvolador and Oscar Cacho, situated on the Cares (Poncebos) route. One of the most recognized trails in Picos de Europa, located in the province of León and the principality of Asturias.



Access

Puente Poncebos.

Approach

From the Asturian town of Puente Poncebos about 30 min by marked trail.

Material

?

Height

590ft (180m) to impact. The first 200ft (60m) well overhung.

Landing

On the trail next to the ravine about 200ft (60m) long with talus on the right and ledge on the left, about 6ft (2m) wide. There is no alternate landing.



Return

20 min on the trail to the car.

Observations

?

Teverga





Dixebra-Vallespí

BASE jump opened by Manu Martinez and Jed Smith on Peña Sobia, Teverga, Asturias. The exit point coincides with the climbing chain of “Dixebra” opened on the wall by “Los Brother” and is dedicated to the memory of Fran Vallespí, thus the name of the exit: “Dixebra-Vallespí”. **This BASE jump has restrictions. Please check before jumping because there is a nesting season in which it is prohibited to BASE jump.**



Access

?

Approach

?

Material

Small length of rope recommended to lower down to the exit point.

Height

Approximately 250m (820ft) to impact. About 700m (2295ft) downslope to the landing.

Landing

On the road.

Return

Evident.

Observations

Be careful landing on the road. Wingsuit jumped by Manu.

Canarias



Tenerife



Los gigantes

Exit opened by Oscar Cacho and Marcos Ostos in 2015.



Access



Approach

The Approach is using the Masca road towards Buena Vista. Once you pass the viewing area of the Hilda cross, there is a road to the left, about 1h 45m. The road takes you along the left side of the Juan Lopez ravine, until you crest at the top where you have to improvise across a field to get to the exit.

Material

None.

Height

The rock-drop is unknown. 1430ft (435m) to the landing with steep talus. Jumped with a tracking suit by Oscar and wingsuited by Marcos. About a 12 second jump.

Landing

Beach landing with large rocks.

Return

Recommend coordinating with a boat from the port of los Gigantes that can pick you up on the beach.

Observations

There are restrictions February thru June along the cliffs and on the beach due to eagle nesting.

Catalunya



Alt Urgell



TR Lleida

Exit opened by Richi Navarro on September 9, 2011 located on the Sant Joan mountain range.



Access

Two options:

- With two cars: from Organyà take the road to Montanissell. From there, take the track that follows the base of the wall. When you see the exit point and landing, leave one car there. In the second car, continue on the track until you get to an intersection and take a right and circumnavigate the backside of the mountain range. Once on the backside take the first track towards the right and then take a left (going right takes you to the Bòixols exit). Stay on the track. It will take you near the edge of the exit point wall, before it starts to descend. This is where you walk in the direction of the cliff.

- With driver: from Artesa de Segre or Coll de Nargó. From Artesa go towards Isona on route C-1412b, in Isona take L-511 (this is the same route that comes from Coll de Nargó) towards Bòixols, past Bòixols take a left. From Coll de Nargó on L-511, take the right, which takes you to the jump/landing towards Montanissell. At the next fork turn left it will take you to the exit point (to the right takes you to the landing site). After taking the left fork take the first right and then the second left (right takes you to Bòixols exit). Continue on this path until it takes you very near the edge of the cliff. This is where you begin to walk.



L-511 fork to Montanissell

Access trail and landing area

Approach

When you are at the edge of the cliff, go towards the left and use the first car as a reference to the approach to the exit. There is a stone marker at the exit; it is very visible on a rock that protrudes like a diving board.

Coordinates approx: 42°12'2.40"N 1°12'30.80"E



Exit view from above

Material

None.

Height

Approximately 180m (590ft).

Landing

At the side of the road, next to a curve that's to the right if you are looking at the jump, where there are various parallel fields one on top of the other.

Return

You either have a shuttled car at the landing area or wait for the driver to pick you up who takes the road to Montanissell.

Observations

Overhung exit and good landing.

Bóixols

Exit opened by Richi Navarro on May 19, 2011 located on the Sant Joan mountain range.



Access

The same as TR Lleida. Once on the backside of the mountain range, take the first right and then another right (after a few meter you will notice another path that heads to the top of the mountain, a good reference is an antenna, which is where the path will take you). When you get to the antennas begin to walk.

Approach

Walk along the edge in an easterly direction from the antennas, and at about 15/20' you will see a second peel below which is where you want to be (easy down climb, no rope necessary). The exit is in the form of a diving board.

Coordinates approx son: 42°11'40.34"N 1°11'24.35"E



Photo from the exit to the upper level



Stone and exit

Material

None

Height

Approximately 90m (295ft).

Landing

Open areas near the main road to Montanissell.

Return

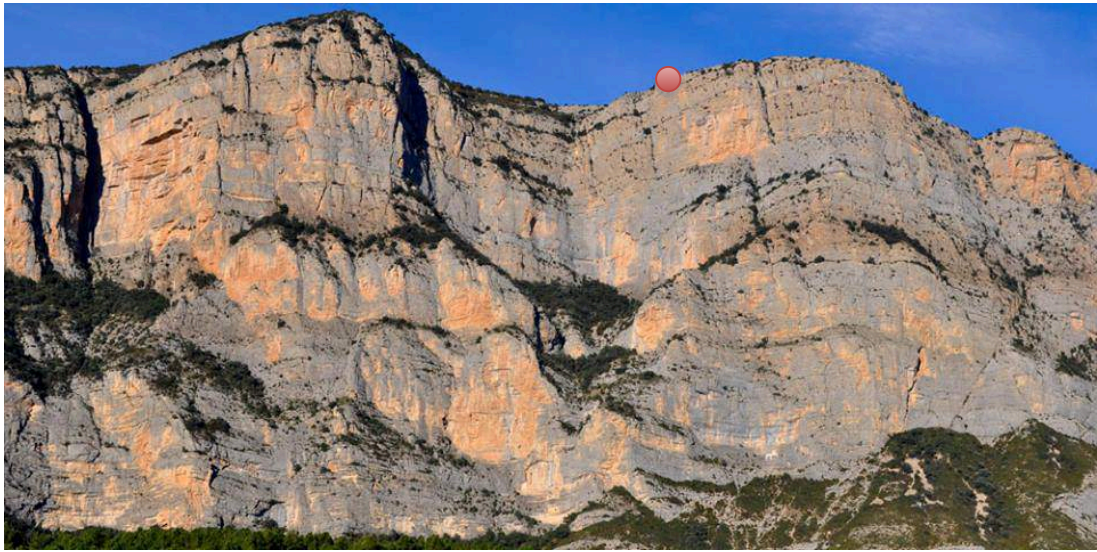
You either have a shuttled car at the landing area or wait for the driver to pick you up who takes the road to Montanissell.

Observations

The road to the antennas is not very good. Recommend a high clearance vehicle or 4x4.

Franc

Exit opened by Richi Navarro on December 17, 2011.



Access

Take route C-14 direction Seu d'Urger. Passing Oliana, before you arrive to the second tunnel there is a part of the old road that's used for parking for those going to Ferrata Regina. Park there (if you have a shuttled car, use the parking before the third tunnel)

Approach

You can get there using the the Ferrata or its return path that's easier and no extra gear is needed. It's a good trail and it gets you to the top of the peak in a little over an hour. Once on top (where there is a return down the Ferrata) head to the right and north. The trail is more or less marked, or it is evident as the path is worn. It runs down close to the cliff. In about 30' you will reach the exit.

Coordinate approx: 42° 7'47.74"N 1°18'5.64"E



Exit

Material

None if you use the via Ferrata return path.

Height

Approximately 80m (395ft) (the wall begins to come out at about 50m down). A total of 640m slope to the landing.

Landing

It can be seen from the exit point, before the entrance of the third tunnel where you see the old road there is ample landing area. You will pass high over high power lines, be aware of where they are when setting up for final landing pattern.



Landing and high power cable

Return

You either have a shuttled car at the landing area or wait for the driver to pick you up.

Observations

You have to commit with a hand held exit due to the wall becoming positive. But the canopy flight is amazing; a ramp in the future could make it interesting.

Cafè David

Exit opened by Ceci Aguirre and David Fusté on 1 October 2016.



Access

The same as for Franc.

Approach

The same as for Franc, except when you get to the Franc exit, continue along the wall's edge until you get to the Cafè David exit.

Material

The same as for Franc.

Height

360ft (110m). a total of 2000ft (620m) of downslope to the landing area.

Landing

You can see it clearly from the exit. There is a wide sidetrack at the start of the old road before the tunnel entrance.

Return

You will have shuttled car there or at the ferrata parking.

Observations

Incredible canopy ride.

BASE Tenebrosum

Exit opened by Mireia Miró and David Fusté, with help from Iban España, in September 2015.



Access

The same as Franc exit.

Approach

The same as Franc exit.

Material

40 meters of rappelling rope until you reach a difficult shelf directly below a large shelf about 30 meters below the top of the wall.

Height

Approximately 160m (524ft).

Landing

The same as Franc exit.



Landing and high power cable

Return

The same as Franc exit.

Observations

Large overhung technical exit.

Vía Ferrata

Exit opened by Mireia Miró and David Fusté, with help from Ceci Aguirre, in December 2015.



Access

Use the parking used by people accessing the via ferrata “Regina”.

Approach

We will climb the via ferrata “Regina” to the top of the big spire, right before a suspension bridge. From there we abseil down 10 meters (or not so easy climbing down) to get to the cliff . We abseil down again 20 meters to get to a very comfortable ledge with the exit point.

Material

Via ferrata’s gear, plus abseiling ropes.

Height

Approximately 130m (426 feet).

Landing

Secondary road.

Return

Just a few minutes from the parking.

Observations

Be careful with the weird wings of the area during the landing.

Pi Mico

Exit opened by Alberto Leyva, Turko Ortiz and David Fusté in December 2013.



Access

Use the parking (secondary road not used) immediately in front of the tunnel entrance between Oliana and Coll de Nargó, next to the parking used by people accessing via Ferrata “Regina”.

Approach

Climb the vía Ferrata “Regina” and then use your intuition, with no visible trail, to head directly to the exit (all the while visible). When you reach the base of a pile of stones, climb up and before you get to the top hang a left into a canal full of vegetation that will take you the edge of the wall via a climb, directly below the jump. Follow the edge until you get to the exit, which will be obvious because the small shelf looks like it was installed for someone to jump from. It is about a two and a half hour hike if you are fast.

Material

None if you use the Ferrata return path.

Height

Approximately 180m (590ft) About 650m (2130ft) to the landing..

Return

None.

Observations

The jump is slightly overhung in a wild and solitary setting, with a fantastic canopy ride.

Nargó

Exit opened by Richi Navarro on May 28, 2011 located between Coll de Nargó and Organyá (Lleida)



Access

Take route C-14 towards Seu d'Urgell, past Coll de Nargó and before reaching Organyá take route L-401 (crossing the d'Espia bridge) in the direction of Alinyá. After passing the first curve (from here you can see an orange cave) you will find a sidetrack on the right where you park the car.



C-14 and L-401 intersection

Approach

If you don't get too lost it's an hour to the exit. By foot continue up the same road looking for the start of a ridge that comes down from the top of the cave. You will see the first piece of the ridge, but don't take it, take the superior one. Between the small part of the ridge and a path that goes down to the river there is (more or less) a path used by climbers. Use the ridge that goes to the top of the cave as a good reference point. Once you get this ridge, access to the exit is a semi-climb that's easy with good hand holds on the rock.

Coordinates approx: 42°11'7.70"N 1°20'8.60"E



Parking, trailhead and main crest



Exit

Material

None

Height

Approximately 115m (590ft) About 400m (1310ft) to the landing.

Landing

The primary landing is the road.

Return

Walk to the car using the bridge.

Observations

The jump is a large overhang, the fall is in front of the middle of the cave and the canopy ride over the Segre River is magnificent. Be careful when choosing the direction of your jump, because the shelf of the exit faces slightly to the right and its not clear which part of the cave you are at. Launching stright will assure that you are falling in front of the middle of the cave and you will have good separation with respect to the lateral faces.

Valldan

Exit opened by David Guti, Adrià Marí and David Fusté in May 2015.



Access

By car from the town of Oliana head towards la Seu d'Urgell. About 500 meters after leaving the town, you will find an intersection. Turn right towards the town/camping of la Valldan. Go thru it and after a couple hundred meters you will reach a field which also the landing area. The jump will be in view in front to the right.

Approach

Look towards the left flank of the walls (there is no trail) to find a ridge to ascend. Once atop the ridge, continue up to the exit. There is no trail and you have to bushwack and scramble. About 2 hours.

Material

None. There is a rope to help you get down to the exit.

Height

Approximately 100 meters (328ft).

Landing

In the large field in front of the jump to the right.

Return

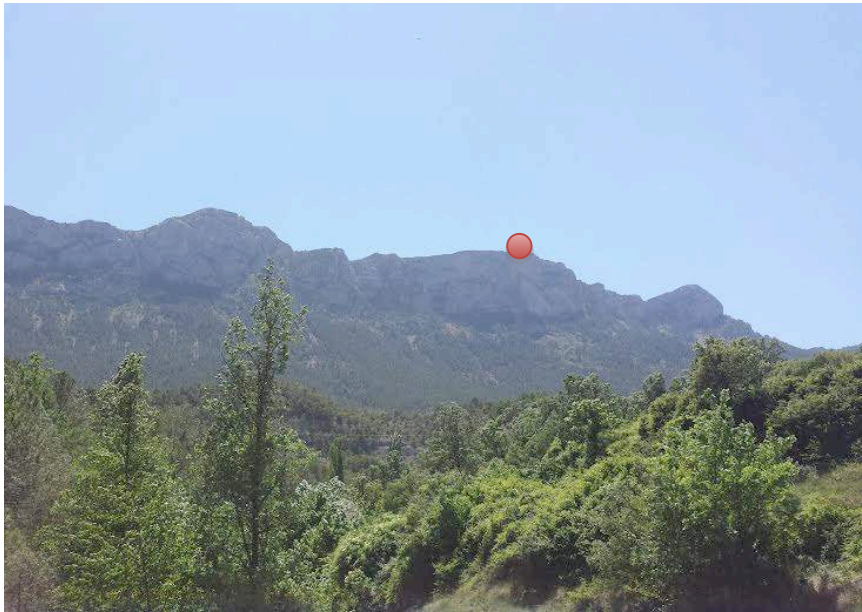
Land next to the car.

Observations

Bushwacking wild access, but definitely worth the effort. Overhung exit with a good landing area.

Cabó

Exit opened by Ramón Maeso, David Guti, Adrià Marí and David Fusté with help from Eugènia in May 2015.



Access

If you have two cars or a driver, head out of the town of Organyà towards Montanissell. Once in Montanissell, take the road towards the Santa Fe hermitage. Park in the large fields before the hermitage. With one car, park at the landing in the fields near the town of El Vilar de Cabó.

Approach

From the fields at the chapel, head up the ridge to left of the wall.
From the landing, take one of the gulleys below the wall to get to the same ridge.

Material

None, there is a rope at the exit.

Height

Approximately 160 meters (524ft), however a PC48/46 recommended due to a positive outcropping halfway down the wall.

Landing

Any of the fields at the bottom of the valley.

Observations

Hand held exit recommended with a nice canopy ride.

Roc del Rumbau

Exit opened by Mireia Miró and David Fusté in October 2015.



Access

Park at the Can Boix Restaurante, between the villages of Peramola and Oliana. The jump is visible right in front.

Approach

From Can Boix take the path towards the Sant Honorat mountains. After passing the narrow pass, leave the path and start heading upward to the right in the direction of the exit. From this point there is no trail, look for the easiest path. About 45 minutes, with some easy rock scrambles.

Material

None, there is a rope at the exit.

Height

Approximately 100 meters (328ft). 150m slope and 250m (820ft) to the landing.

Landing



Any of the fields at the bottom of the valley to the right. The third field to the far right is the biggest and cleanest. Keep clear of the left edge of it, due to large bushes.

Observations

Be careful with 90 degree off heading either way. Respect the Can Boix restaurant private property, don't drive into the private enclosures nor make any loud noises while landing..

Artesa de Segre





Salgar

Jump located at the Salgar hermitage, opened by Richi Navarro and David Fusté with help from Àngela Riba in November 2014. **Jump prohibited during nesting season. (January to August)**



Access

Take route C-26 towards Seu d'Urgell, after Cubells and before Artesa de Segre take LV-913 towards Foradada. After passing thru town, take the dirt road on the right. Continue this road until you get to a clear intersection. Best to start walking at this point. If you continue by car, take the left road.





Approach

About 10' The approach is to the left (easiest) of the small valley. The path is marked with stones, near the cliff edge go towards the right until you get to a mound. The exit point is below under a small ceiling that you have to climb down about 3 meters (a small piece of rope is recommended).



Material

10 meters of rope to reach the exit.

Height

Approximately 80 meters (262ft) and 150 meters (492ft) of slope down to the road.

Landing

The same road at the base of the jump, to the right of the hermitage from the exit
(Caution with the power lines next to the monestary)

Return

Second car waiting at the landing.

Observations

Super committed jump, due to its verticality and few landing options.



Clua

Exit located in front of the town of Clua, opened by Richi Navarro and David Fusté November 2014.



Access

From Artesa de Segre take the road towards the town of Clua. Before arriving to the town you will see the wall on the left.



Approach

Approx 1h30'

To the right of the wall, best if you have two cars. A couple kilometers down the road past the jump, take a forest road (only 4x4, it's a long walk) go up the hill (where the wall starts from the right) leave the forest road and take an unmarked road on the left, walking atop the vertical part of the wall you will reach a stone marker that indicates a downclimb to a lower level. There is a large tree (gear up here) where there is a rope to get you down the final 15m. (see photo)



Material

There is a rope to help you get down to the exit point. If you are not comfortable in this type of terrain, its recommended to wear a harness and grigri for you descent.

Height

Approximately 80 meters (262ft).

Landing

In the field in front slightly to the left.

Return

Depends. Walk towards the forest road where you left the car or none if you parked at the landing.

Observations

Be carefull with the small ledge to the right that's about opening altitude.

Benavent de la Conca



Tais Roc

Jump is located in Benavent de al Conca (Lleida), opened by Richi Navarro on January 15, 2011.

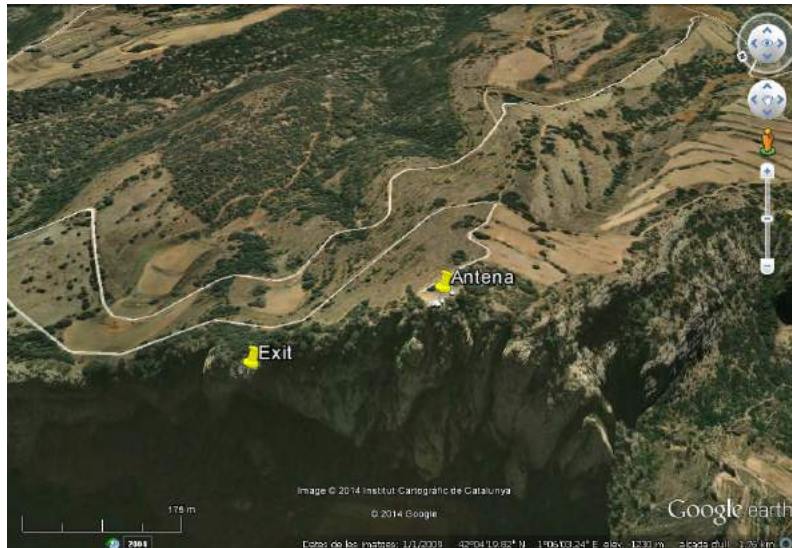


Access

Two options:

- With driver: from Artesa de Segre take route C-1412b towards Isona. After passing the port of Comiols and before reaching Benavent take a right on the road Camí de la Garriga (there is a sign). Continue the road towards the right (there are electrical towers that make a good reference) and head in the direction of the antennas (north) and take the only path that heads to the left. A little bit further along this path you will see another that heads towards an antenna and just before you arrive to it another path brakes off to the right, this path will take you to the exit. (be carefull with low clearance vehicles, because the road is not good).

- Without driver: rom Artesa de Segre take route C-1412b towards Isona. Arriving at Benavent leave the car parked in a bus stop zone (or the side of the road). From here there is a trail more or less marked up to the antenna.



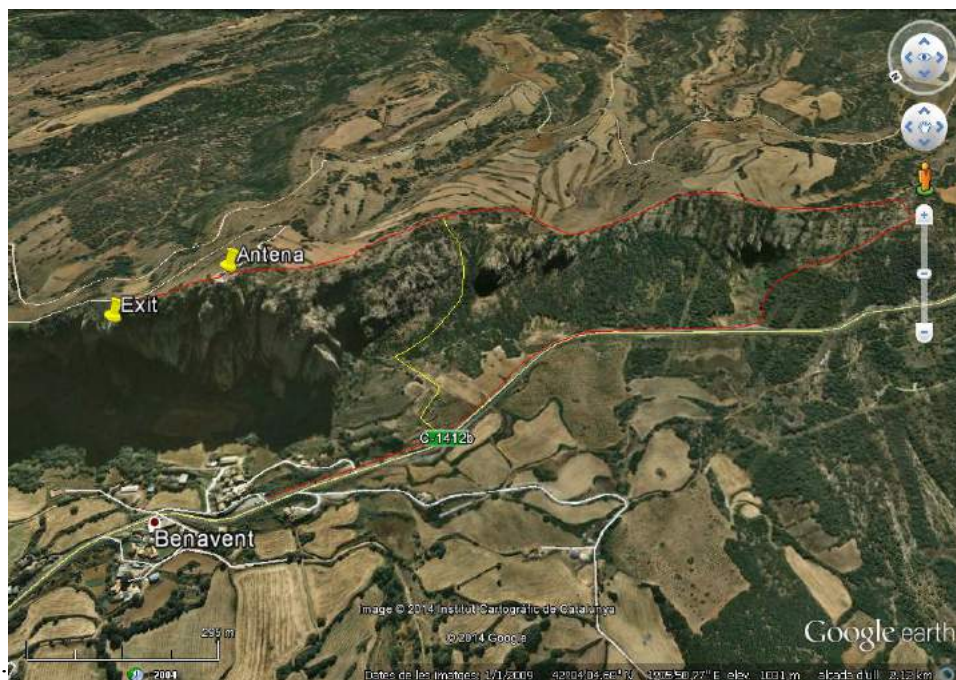
The antenna is a good reference

Approach

- With driver: 2 minutes from the path.

- Without driver: Start at the town and parallel to the road in the direction of Artesa there is a path that is somewhat marked but evident that it takes you up to the antenna. (There is a shortcut that's a bit wild but fast 45'). From the antenna to the exit is about 5'. The exit is about 10 meters down; there is a small one person shelf. Climb down from the left of the exit, it's easy. (Gear up before the climb down). A good reference is a small bush that's a little down to the left and some large rocks in an open area (jump over them).

Coordinates approx: 42° 4'26.84"N 1° 6'2.24"E



Possible access route plan



Exit with the bush on the left and large rocks near the meadow

Material

None or if you want to feel more comfortable, bring 15m of rope to help climb down to the exit.

Height

Approximately 120m (394ft).

Landing

In large open fields (be careful with large rocks, they are spread throughout the fields. Your ankles will thank you).

Return

To the town and to the car.

Observations

Be careful with the wall to the left in the case of off-heading openings. It isn't necessary, but if you want to feel more comfortable with the climb down to the exit, bring 15m of rope.

Camarasa



Xaxo

Exit opened by Richi Navarro and Óscar Cacho.



Access

Two options (taking two cars is a waste of time):

- With driver: from Balaguer head towards Vilanova de la Sal using route LV-9047 in the direction of Gerb. Once in Gerb take LV-9046 towards Vilanova de la Sal. A better, longer, route is to take C-12 from Balaguer towards Àger until you reach the Monasterio de les Avellanes where you will take LB-9046 towards Vilanova de la Sal. Once across town take LV-9045 towards refugio del Búho (Owl refuge) and go past the Ermita de Montalegre. There will be signs indicating this. At the last sign, which takes us off the road begin the walk. (Continuing by car is not worth it due to bad road conditions and at 600m there is a gate).

- One car: from Camarasa take route C-13 in the direction of Tremp, once you cross the first bridge over the river (tight curves) take a left that takes you to a path that goes to refugio del Búho. You can drive up to here (and then walk from the landing to the care about 1.3km) or leave the car at the landing, which is 300m past the bridge in the Tremp direction on the right, and start your walk there. If you have two cars, leave one here and other at the start of the refugio path and if you have a driver and don't mind uneven terrain this is a good option.



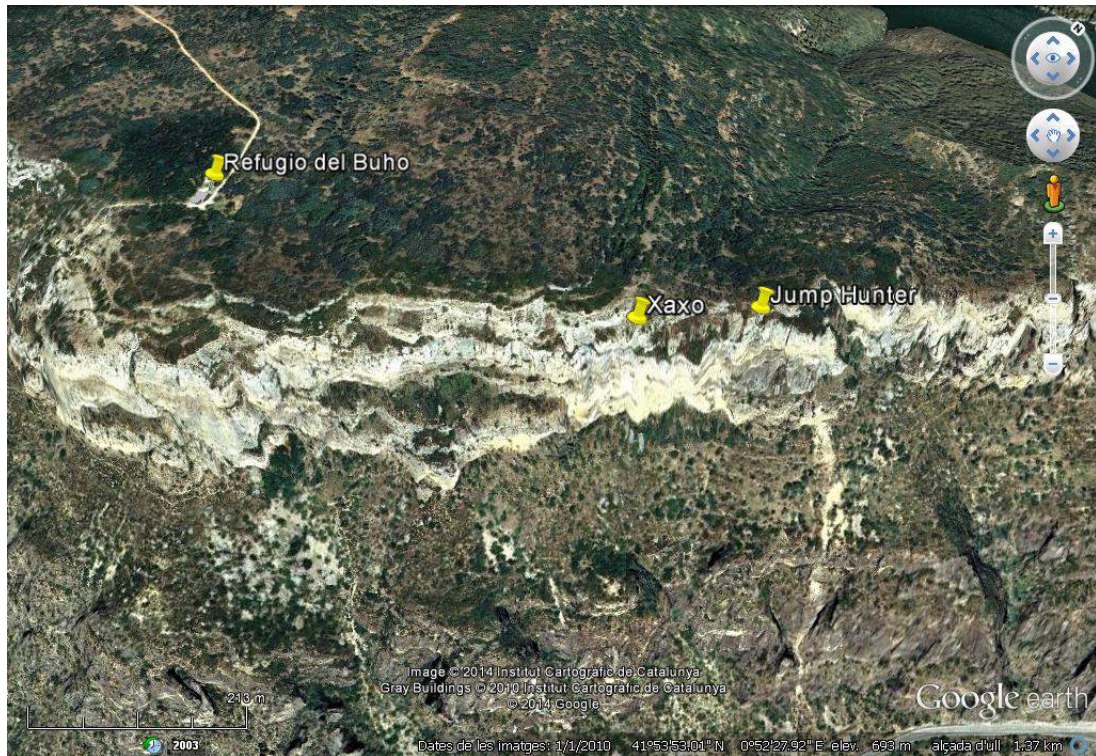
Plan showing the landing area and trailhead to the refugio

Approach

From the Montalegre path take the trail that goes underneath the Mont-Roig BASE jump until you get to the refugio del Búho. (appro. 1 hour taking your time).

From the refugio take the path that is evident up to the wall of the cliff, where you will head left, always keeping the wall to your right (NE direction, Tresp) in about 10' you will be at the Pared dels Sostres (wall of Sostres). You must head to the lower levels being that the exit isn't at the top. Just before the last climb down there is a stone marker (this is where you gear up). A small platform and you are at the exit.

Coordinates approx: 41°53'55.14"N 0°52'29.76"E



Refugio and exits

Material

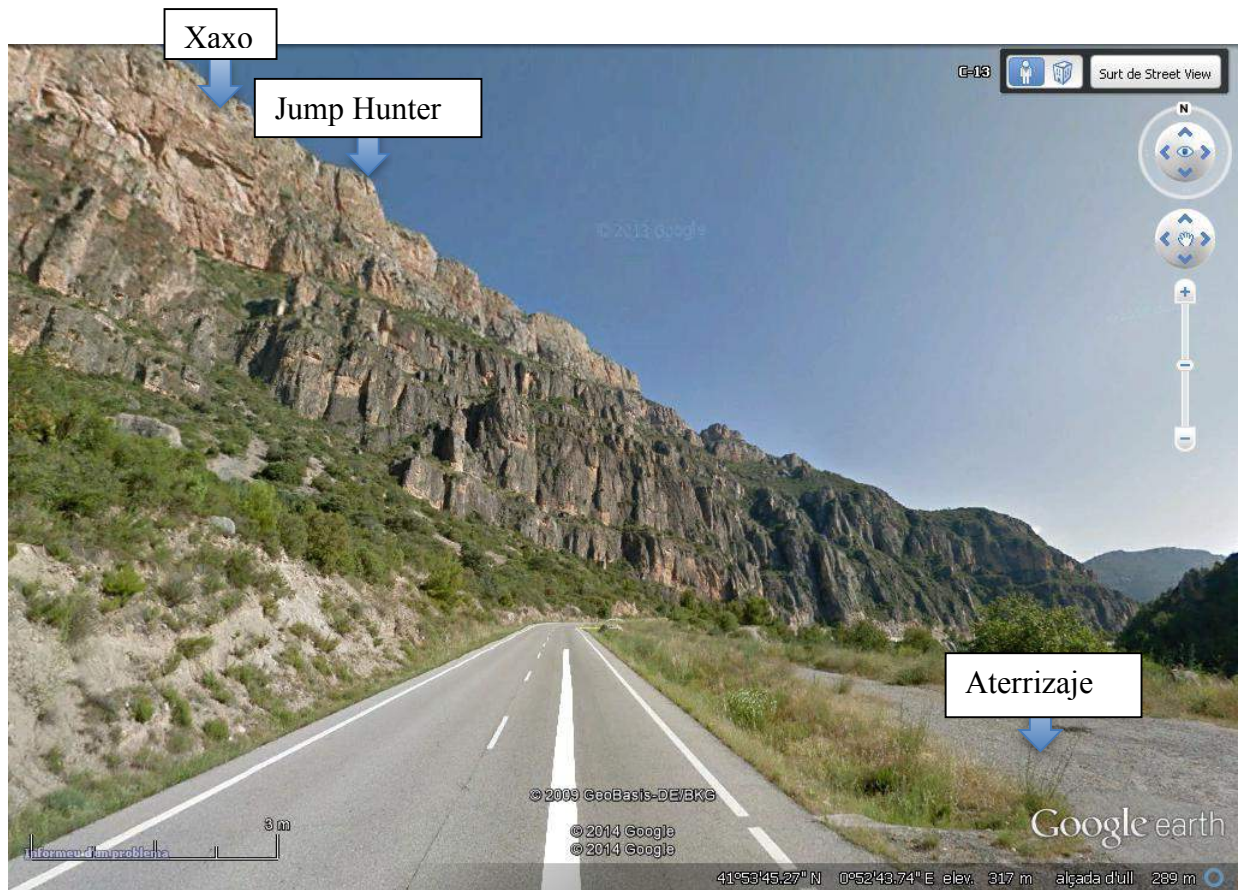
None.

Height

Approximately 140m (460ft) to impact + 300m (985ft) ramp to the landing.

Landing

Next to route C-14 there is a large piece of path and a parking lot, visible from the exit point.



Return

The car is either there or 1.3km towards the refugio trailhead, wherever you left it.

Observations

Overhung exit with good landing.

Jump Hunter

Jump opened on August 25, 2009 by Richi Navarro and Emilio De Bricio.



Access

The same as Xaxo.

Approach

From the refugio del Buho it takes about 15' heading in a (NE) direction, and always keeping the wall face to your right. The exit is lower than the trail (by about 5m), in the form of a balcony and is obvious.

Coordinates approx: 41°53'58.76"N 0°52'33.70"E.

Material

None.

Height

Approximately 90m (295ft) + 300m (985ft) ramp to the landing.

Landing

The same as Xaxo.

Return

The car is either there or 1.3km towards the refugio trailhead, wherever you left it.

Observations

Slightly overhung exit with a magnificent canopy flight and good landing.

Bolita

Exit opened by Turko Ortiz and David Fusté in June 2013.



Access

From Camarasa go in the direction of Tremp. Park at the exit of the tunnel that crosses over the Camarasa dam. There are parking lots on both sides of the road.

Approach

Hike up and over the tunnel following a small path that skirts the right side of the wall (facing it). At your own convenience, leave the path and head towards the top of the wall. The exit is more than obvious and incredible, because it consists of a large round stone that juts out of from the face of the wall.

Material

None.

Height

Approximately 90m (295ft).

Landing

On the road.

Return

None.

Observations

Vertical jump with a good landing, but on the road. Be cautious and watch for traffic..

Navarros

The first attempt by Richi Navarro in August of 2009, he found the exit and marked the trail but weather did not allow the jump. In May of 2010 Richi, Emilio de Bricio, David Gutierrez and Hubert Shober tried again. It wasn't until July of 2013 when Turko Ortiz and David Fusté made the first jump.



Access

You need two cars or one with a driver.

For two cars there are two options:

1. - Leave one car at the base of the mini dam of río Segre. To reach this place from Camarasa, head in the direction of Tremp, after a few kilometers, just before you cross the bridge over the river, take a small road to the right. Follow it to the end.

After you leave on car there (the wall will be directly over top), head back to Camarasa with the second car and head up to the ermita de Sant Jordi, although instead of reaching the ermita, stay on the path until you reach the end. Park anywhere you can.

2. - From Camarasa head towards ermita de Sant Jordi, at about 1.5km you will find 7 consecutive mini-curves about 180o, before the 5th there is a path to the left. Take this path to the end (its the service road for the electrical towers) and leave one care there. Take the other car towards ermita de Sant Jordi to get to approximately the same place mentioned above.



General Access Plan

Approach

To not get lost, look for the edge of wall and walk until you find a large stone that marks the exit. In any case, if you have a good idea of where you are going, you can head towards the wall further ahead to avoid making lots of turns. There are stone markers from the last prairie where you leave the car to the exit.

Material

None.

Height

Approximately 150m (490ft).

Landing

At the base of the wall, to the right, there is a clearing surrounded by trees. There is a 40-degree inclination and lots of large boulders. Recommend wearing ankle support.

Return

Head down to the left (no trail), towards the first car (option 1 red), until you find a small trail (this path to the left will take you to the, option 2 yellow, car) then head down on a well-marked path to the car (option 1 red).

Observations

Large overhung exit with bad landing.

Collegats



Trident

This is the first BASE jump opened in the Pallars. By Richi Navarro, Óscar Cacho and Turko Ortiz on January 9, 2013.



Access

Leaving Pobla de Segur towards Sort on route N-260, before reaching the first tunnel you will see the old road to the right. Park the car where it will not impede your landing.

Approach

Use the descent path the climbers use, it is well marked and equipped with ropes and chains. It starts about 300m to the left of the landing area. The exit is at the top of the central minaret.

Material

None.

Height

Approximately 90m (295ft)..

Landing

On the old road (be careful landing on the bridge, there are high drop-offs on both sides).

Return

None or to the car.

Observations

Parking is prohibited on this part of the road; if you must leave a car unattended, leave it at Font de la Figuereta, 300m before the tunnel on the right.

Kalimera

Exit opened by Richi Navarro and Oscar Cacho on January 10, 2013.



Access

From Poble de Segur towards Sort on route N-260, park at Font de la Figuereta, 300m before the tunnel on the right. another option is to park at the climber return trailhead which will take you toe the top of the wall. The problem is there is no room for vehicles.



Very small parking at the trailhead

Approach

From Font de la Figuereta, hike (about 1km) using the old road avoiding the tunnel until you reach the small parking lot at the trailhead, unless you park there. The path is very well marked. A good reference is the electrical towers that you head towards. When you get to the towers take the path that goes SW towards a canal that's equipped with chains (the ferrata). It will take you to the top; follow the path along the edge until you reach the stone marked exit. It's a mini ramp.

Coordinates approx: 42°17'17.56"N 1° 1'56.13"E.

Material

None or if you like, a strap to secure you to the ferrata.

Height

Approximately 180m (590ft).

Landing

The obvious clearing visible from the exit next to the road.



Landing area and high voltage lines

Return

None or to the car at Font de la Figuereta.

Observations

Jump is slightly overhung that tends towards vertical at the bottom. **Be careful of the high power lines** (the ones you will see on the hike up), you will pass over them with plenty of altitude, but keep them in mind.

Paret de la Repressa

Exit opened by Pascal Dupont and David Fusté on 18 February 2016.



Access

The same as for Kalimera

Approach

The same as for Kalimera. The electrical towers are a good reference, head towards them. Just before you reach them, start looking for the wall's edge via a light descent towards the right.

Material

A small length of rope is recommended to rappel to the exit.

Height

Approximately 360ft. (110m).

Landing

Land on the secondary road at the base of the wall.

Return

None or to the car parked at Font de la Figuereta

Observations

This is an overhung exit with little room for error on landing.

El Serradell



Access

From Poble de Segur take route N-260 to the town of Serradell. After you pass through the town and towards Barrancot leave the car on the side of the road (before the livestock fence). From here you can access three jumps.



Palomera

Exit opened by Richi Navarro and Oscar Cacho en Diciembre de 2014.



Approach

From the car take the forest road until you get to a ravine that extends down from the shoulder of the jump. You can traverse the ravine, but towards the end it gets steep and has loose rock.

In about 1h30' you will arrive at the exit marked by stone. There is an affixed rope to help you climb down.





Material

None

Height

100m (328ft)

Landing

In the fields to the right.

Return

Head back to the car.

Observations

Be careful in the final approach on the shoulder.

Bros

Exit opened by Richi Navarro, Oscar Cacho, Turko Ortiz, Luís Alonso, Luís Manzaneda and Pau in January 2015.



Access

See Serradell Access

Approach

From the car, after passing a fence on the road, take a well marked path at the base of the mountain until you have a direct path towards the hill to the left of the exit point peak. This path will take you there. You arrive in about 45'. The exit is will marked with stone.



Material

None

Height

140m (460ft)

Landing

In the large fields directly in front. (be very careful with the power lines at the bottom of the valley)

Return

To the car

Observations

Serradell

Exit opened by Richi Navarro, Oscar Cacho, Turko Ortiz, Luís Alonso, Luís Manzaneda and Pau in January 2015.

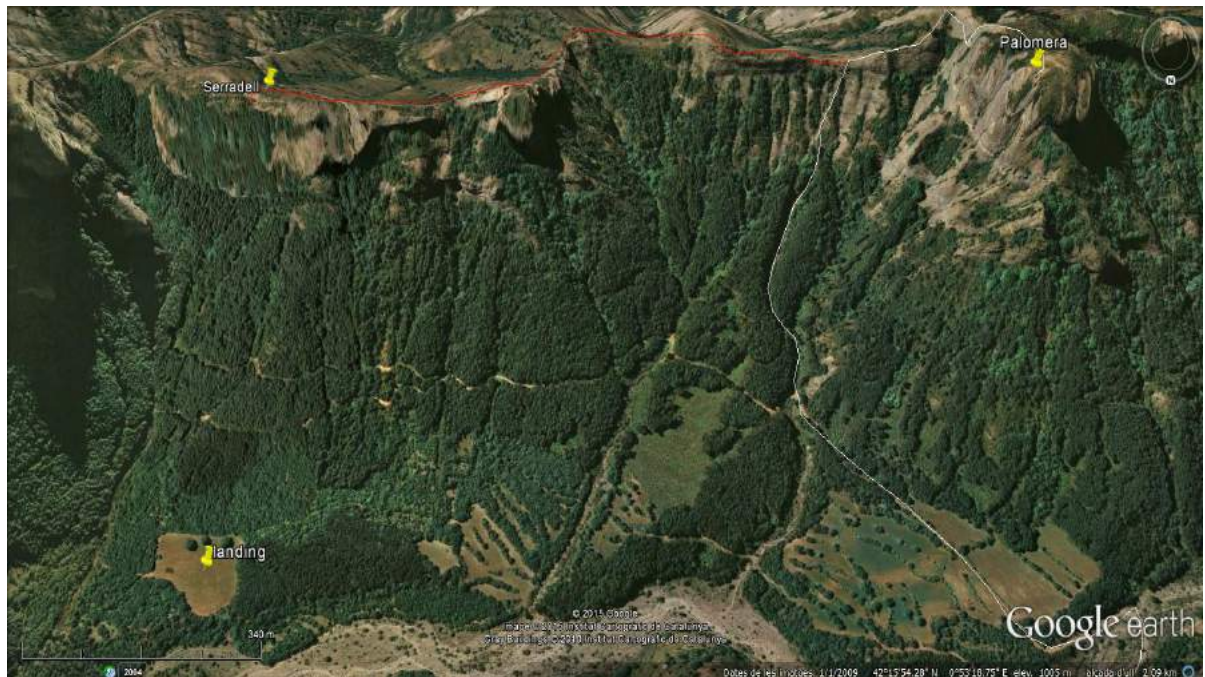


Access

See Serradell Access

Approach

1h15'/1h30' The same as Palomera, but once you arrive at the top of the shoulder, go left. A good reference is to look for the highest level of the mountain. From there, descend to the cliff edge. (gear up before the descent) There is an affixed rope to help get to the exit.





Material

None

Height

90m (295ft)

Landing

In the field

Return

To the car, you can head straight across the valley. There is no trail but its easy to cross.

Observations

Be careful with the final approach to the shoulder.

El Doll



Cabreta

Jump opened in Camarasa (Lleida), on the Pared del Doll. A project started by Enrique Pastor on October 10, 2008, and opened by him, Siscu, Carlos, Juanjo and Hubert with the collaboration of Richi and filmed by the program “Temps d’Aventura” for TV3.



Access

From Camarasa take route C-13 towards Tremp, before and after km 57 there is an entrance on the left. Take the entrance and take the path that goes down, at the next intersection go straight until you reach a meadow; you can park that car there.



General Access Plan, parking and exit

Approach

From the car head SE via a path that is somewhat marked all the way to the exit. (It is an easy 5-minute walk). The exit is obvious, it's equipped with rope and there are various platforms to choose from.

Material

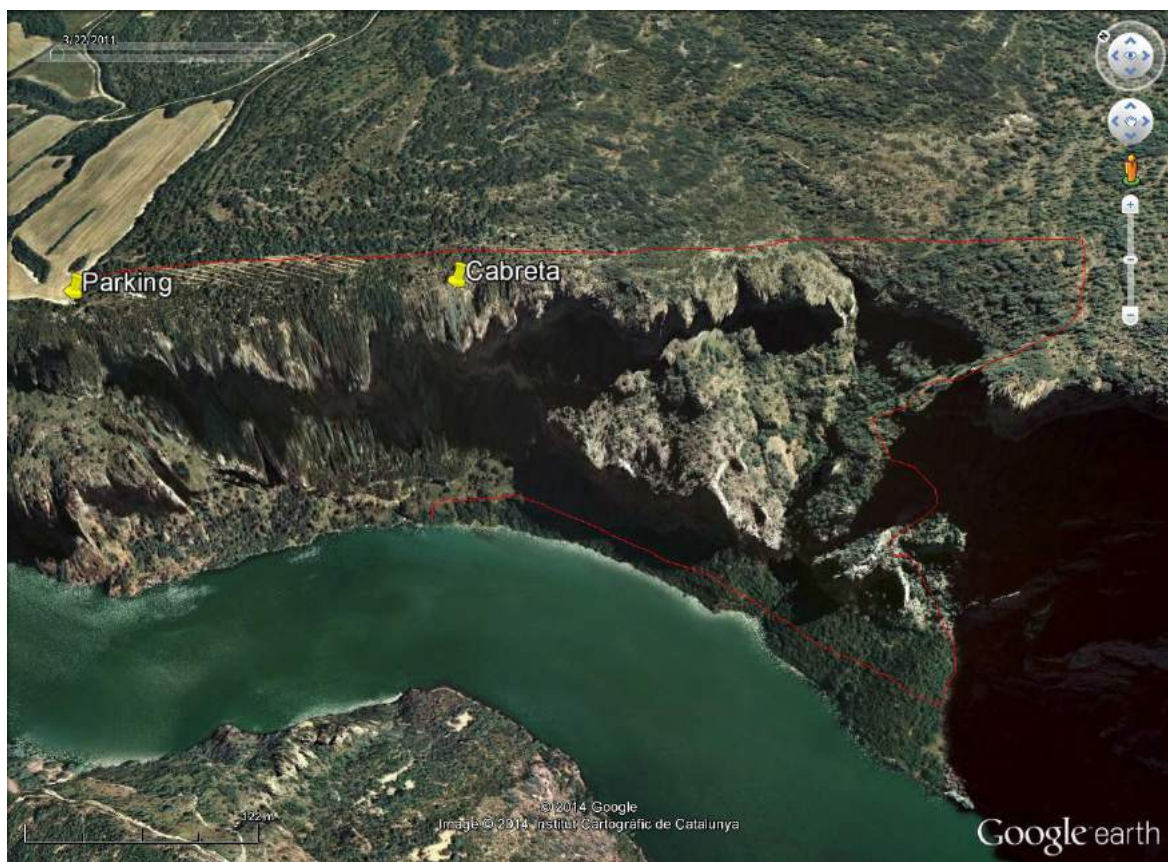
None.

Height

Approximately 230m (755ft).

Landing

This is a big jump with a big problem... the landing. If the water level in the dam is high, don't jump unless you have a boat waiting. When the water level is low, there is a small 30o talus that appears, but has varying sizes of predominantly large rocks.



Return al coche por el sendero de los escaladores

Return

From the edge of the water take the climbers path (marked in red), its pretty rough with weeds and thorns... in less than an hour you are back at the car (about 2km).

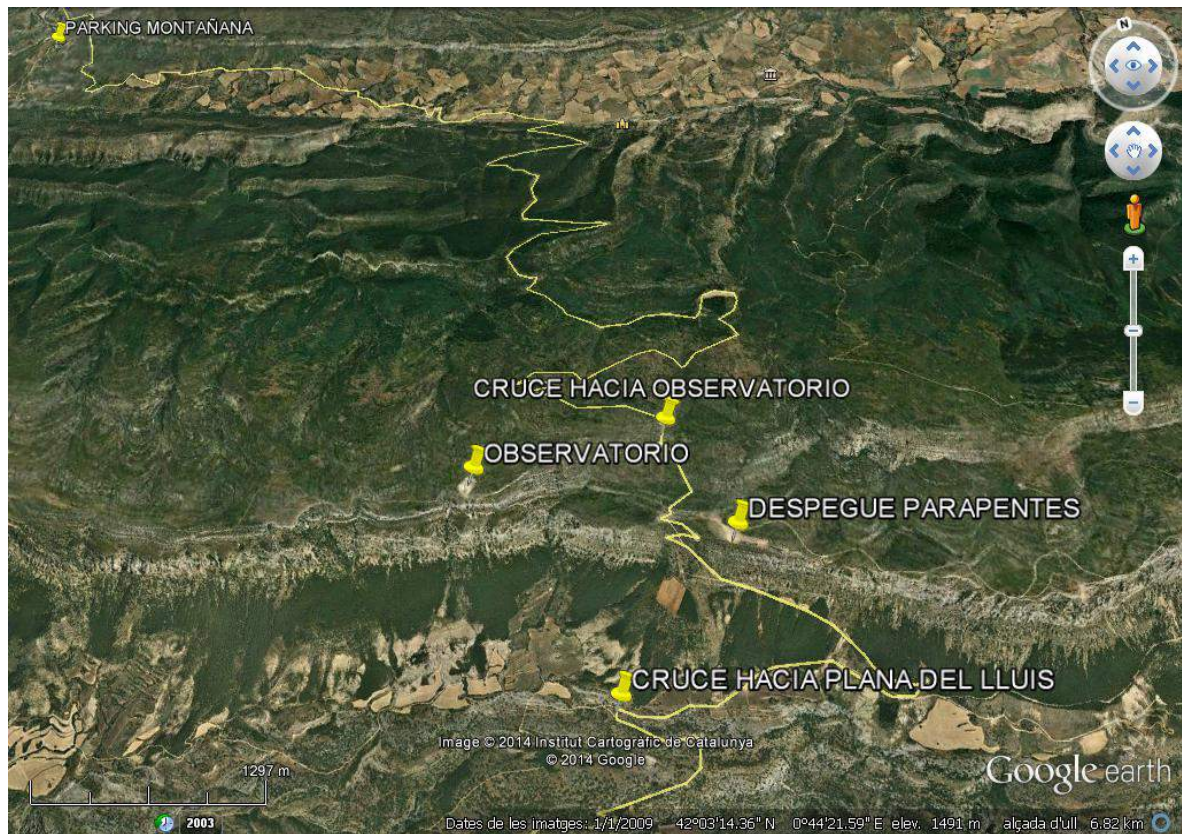
Observations

Jump is a large overhang and a bad landing.

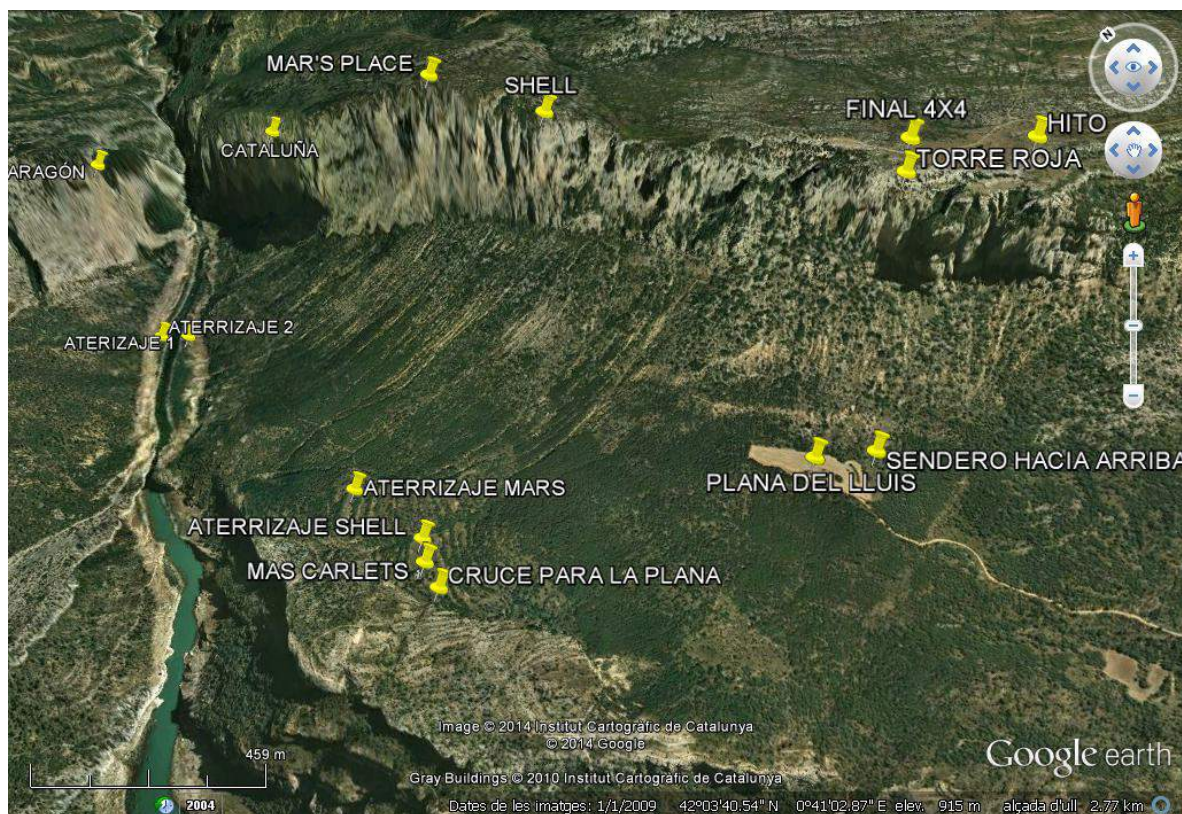
Montrebei



GENERAL MONTREBEI AREA TOPOS



ACCESS FROM ÁGER AND FROM THE BRIDGE OF MONTAÑANA



EXITS, LANDING AREAS AND PLACES OF INTEREST

Aragón

Exit opened by Erich Beaud and Mickey in May of 2002 on the Aragón wall.



Access

Even though the jump can be done solo, the return can be long and costly, ideally use two cars or have a driver. One of the cars can be parked at Congost de Montrebei, via Puente (bridge) de Montañana. Head to Viacamp in the other car and take the route that heads out of town in the direction of refugio de Montfalcó, after about a 20' drive park in Pilastra dels Voltors. (Electrical towers make a good reference, the road goes up along several of the towers, you will find the parking lot after 100m on the left).



Parking and Trailhead to the top of Montsec d'Estall

Approach

About 90 minutes. You will go over a fence that blocks the path and keep walking up until you are almost at the peak of Montsec d'Estall. On a pronounced curve hanging to the right you will see a stone marker (on the left) that marks the trailhead (a long vertical stone ramp) which on descent and following the edge of the wall you will reach the exit. The trail is modestly marked by stones, there are some sketchy areas but if you have a decent idea of where the exit is, you won't have too many problems. Some good reference points are a quarry with a large stone marker, a ramp with a rope and a very large tree that indicates the exit. There you will find a tope to help you reach the exit, with three possibilities:

- Climb down a meter to a small platform (not flat) where the exit is not too comfortable.
- Without climb down, from the top platform (easiest).
- To the left of the platform (5 meters down), there is another larger platform, the original one (climb down not recommended because the rope is old).



End of the trail and initial descent to Volor and Aragón

Material

None.

Height

Approximately 450m (1475ft) + 150m (490ft) down slope to the landing.

Landing

It is dependent on the water level of the Canalles dam. If it is less than 40% there is a landing on the Catalán side, a little south of the jump, next to the river. If the water level is between 40% and 60% the only alternative is the Aragón side, on the talus coming out of the water on the same wall as the jump. If the water is more than 70% there is no landing available.

Return

If you land on the Catalán side you must hike up to the path (there are a few routes maintained and marked with stones) that crosses a narrow and heads north back to the parking lot where the first car was left. If you land not the Aragón side you have to cross a rope bridge to the south and find the path that heads north to the parking lot.

Observations

One of the best tracking jumps in Spain (not too good for wing suiting due to lack of talus). Overhung jump with good landing when water level is low and you land on the Catalán side. If you can only land on the Aragón side, the landing is precise and dangerous.

Voltor

Exit opened by Richi Navarro and Emilio de Bricio in December of 2011 on the Aragón wall.



Access

The same as Aragón wall.

Approach

The same as Aragón exit, except you will find the exit a few meters into the descent to Aragón. The exit is a large nose that sticks out over the vertical wall. There is a small stone marking a small climb down to the exit.

Material

None.

Height

Approximately 230m (755ft) an 760m (2490ft) down slope to the landing.

Landing

The same as Aragón and Catalunya

Return

The same as Aragón and Catalunya

Observations

Very large overhung exit at the start and more vertical towards the bottom. Spectacular canopy flight in front of the Aragón wall.

Catalunya

The first jump opened on the Catalunya wall, also known by many jumpers as Old Catalonia (Catalunya Antigua). Opened by Erich Beaud, Mickey and Laurent Pechberty on July 16, 2002. In 2009 Juanjo Medina and Enrique Pastor installed a platform to make the exit easier.



Access

While there are three options (two can be done with one car and the other option requires two), here we will discuss the two car options, since the others require long walks.

The first car can be parked at the same place as Aragón wall.

The second car, leave the parking lot and turn right onto the road. You will head uphill to the port, you will take a right at the fork and keep going up until Coll d'Ares. From there take the route towards the observatory and park there. The road continues, but you need a 4x4. (it will leave you 20' from the exit)

Approach

About an hour and a half.

Once parked, take the road until it ends, it puts you almost on the edge of the wall. Keep on the path that goes down along the edge until you find the metal platform that marks the exit.

Material

None.

Height

Approximately 300m (985ft).

Landing

The same as Aragón jump.

Return

The same as Aragón jump.

Observations

Be careful of the first talus. **If the water level of the dam is more than 38% there is no landing, it is recommended not to jump.**

Mar's Place

Exit opened by Enrique Pastor, Jordi Canals, Carlos Escobar and Albrecht on February 14, 2009.



Access

While you can do the same as the Catalunya jump, the best combination in the case of not being able to land next to the river, with two cars, park one at the landing site of Torre Roja (Plana del Lluís), and the second at the Coll d'Ares observatory.

Another option, with one car, from Plana del Lluís, take the climber descent route, it starts at the Plana parking lot and it takes you to the top of the wall, from there continue like if you were coming from the observatory.

Approach

About an hour.

The same as Catalunya jump, but you will find the exit, marked by stone, way before.

Material

None.

Height

Approximately 378m (1240ft) and 600m (1970ft) down slope to landing 900m (2950ft) to the channel landing.

Landing

There are two options. If the water level of the dam is low and the landing site exists (explained on Aragón wall jump), use it. In the case that the dam landing

isn't possible, land in the area of Mas Carlets, a small meadow easily visible to the left of the jump. the middle one is the biggest and cleaner with a lot less trees and vegetation than the others.



Landings in the area of Mas Carlets and primary path

Return

If you land in the channel (dam), same as Aragón and Catalunya.

If you land in Mas Carlets, leave the meadow in the opposite direction of Congost you will arrive at the main path, after passing the refugio of Mas Carlets use the path to the left that takes you to Plana del Lluís (Torre Roja landing site) marked obviously with stones. You are there in 25 to 30 minutes.

Observations

Be careful of low pulls if you intend to land in Mas Carlets. With a southerly wind you will not reach it and the only alternative is a tree landing. The Mas Carlets refuge has a fountain.

If the water level of the dam is more than 38% there is no landing, it is recommended that you land in Mas Carlets.

Shell

Exit opened by Hubert Shober, Frank and Daniel Hernán in 2006 to film a Shell commercial for TV.



Access

The same as Mar's Place.

Approach

A bit before Mar's Place, using the same path take another that goes up and ends up at the edge of the cliff.

Material

None.

Height

Approximately 200m (655ft).

Landing

In the Mas Carlets meadows.

Return

The same as Mar's Place.

Observations

Vertical jump with lots of outcroppings. It's' only been jumped once.

Torre Roja

Exit opened by Emilio De Bricio and Richi Navarro on June 13, 2009.



Access

2 Options (two cars are a waste of time)

- Without driver: From Áger head towards Coll d'Ares (paraglider launch site). A few kilometers after leaving Áger and almost reaching the pass, you'll find an intersection on the left on a tight turn that veers right. Continue on this road, where you will quickly reach another intersection and turn right. Follow this road until the end, directly below the jump and park.



Turnoff towards Plana del Lluís

- With driver: Head towards Coll d'Ares and take the road to the observatory. The road continues, but is very rough. With a 4x4 you can reach the top of the exit. From there the path is well marked with stones. There is a down climbing rope next to the exit (about 5'). The walk takes 1 hour or if you're dropped off the driver can pick you up at the landing site (Plana del Lluís).

Approach

- From Plana del Lluís: Look for a small road that exits the parking lot (to the right of the meadow, looking that the wall) and follow it staying on the right. It will take you to a small channel which will take you to the top near the exit, marked with a stone, where you will find an old affixed rope you can use to look over the edge.

- From the observatory: Continue to the road until you find a very large stone marker, this is where you descend down a level so you can skirt the wall to the right (same as if you ascend from Plana del Lluís)

Material

None.

Height

Approximately 140m (460ft).

Landing

In the field where you parked.

Return

None.

Observations

Vertical jump (overhung after passing a ceiling half way down the wall) with perfect landing. 2 second delay puts you below the ceiling.

Renee's Place

Exit opened by David Walden in June 2016.



Access

The same as for Torre Roja.

Approach

The same as for Torre Roja, except you need to trek a few more minutes along the edge of the wall and climb up a small ledge to the exit, located at the top of a spire.

Material

None.

Height

Approximately 200ft (60m).

Landing

The same as for Torre Roja.

Return

None.

Observations

Extreme wingsuit jump. Positive about 200ft down and gentle slope to the landing.

Montroig



Montroig

Exit opened by Turko Ortiz and David Fusté in January of 2014.



Access

From Balaguer head towards the town of Vilanova de la Sal. Once in Vilanova de la Sal, take the route that takes you to Ermita de Montalegre. A few meters before reaching the top, when you are more or less at the base of the wall, park where possible.

Approach

You can climb straight up or walk up the one of the obvious channels to the left of the wall. You will find the exit at the top of some large ceilings, which will be evident as the ledge looks like a diving platform.

Material

None.

Height

Approximately 80m (262ft).

Landing

On the path at the base of the wall.

Return

Walk to wherever you parked car.

Observations

Low and overhung exit with a tight landing.

Montsant



El Racó de Missa

Exit opened by Richi Navarro and Oscar Cacho on January 4, 2013.



Access

From Morera de Montsant, shortly after leaving the town, take a right and after a few meters take another right. From this intersection to the trailhead there are approximately 2.5km (staying on the main path, well marked, and ignoring secondary paths). You can park the car at this location or another 600m down near the landing next to a raft used for construction. (With two cars you can avoid a long climb).



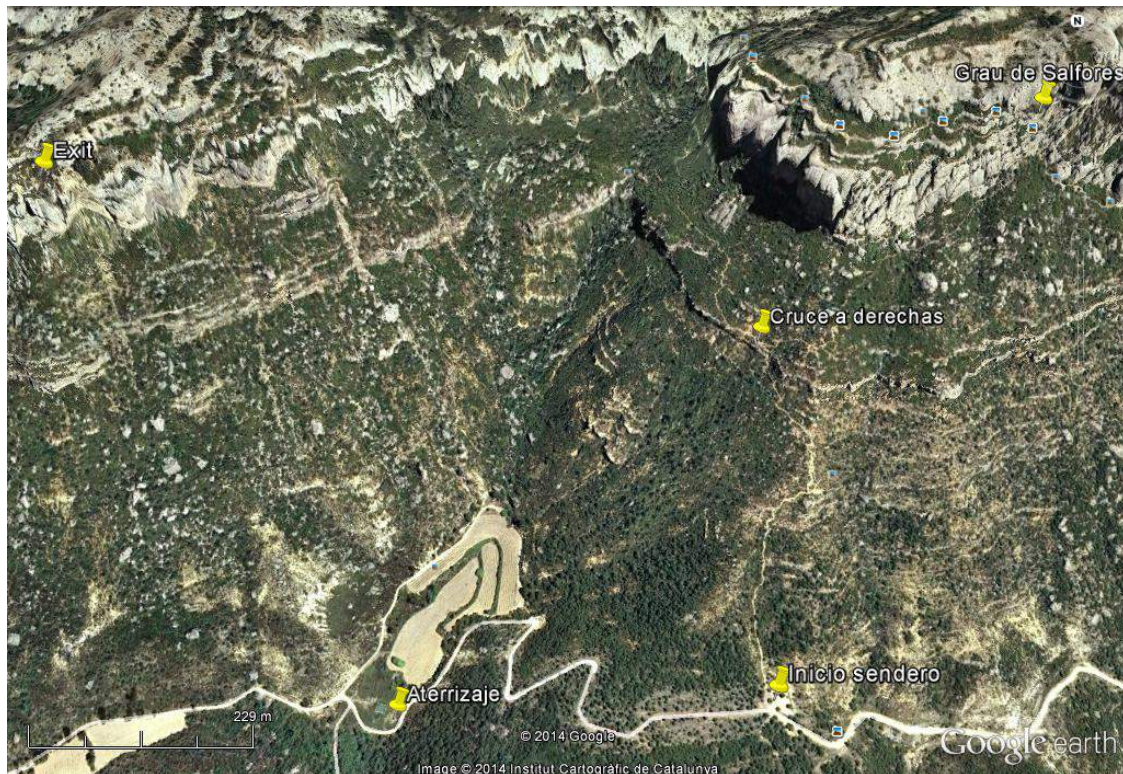
Right hand turn shortly after leaving town

Approach

Take the path towards Grau de Salflores, it is well marked. Once you pass steel steps, follow the path to the right; it will ascend to el Grau. At the highest point of the trail, head NW, you will hike to another part of the mountain (there is an visible path along the mountain range). From here you should see the exit in the form of a nose, high ceiling with orange colored lower part. Head towards the top of the nose. The exit will be below and an easy climb down. There is a climbing plate on the back wall of the exit.

The exit is directly to the right or climb down a little to the left.

Coordinates approx: 41°16'8.57"N 0°48'33.88"E



General jump topo

Material

None or small rope for the climb down on the left.

Height

Approximately 100m (328ft).

Landing

Small field next to the raft, the road is an emergency option.

Return

None or walk to parked car (approx. 600m.)

Observations

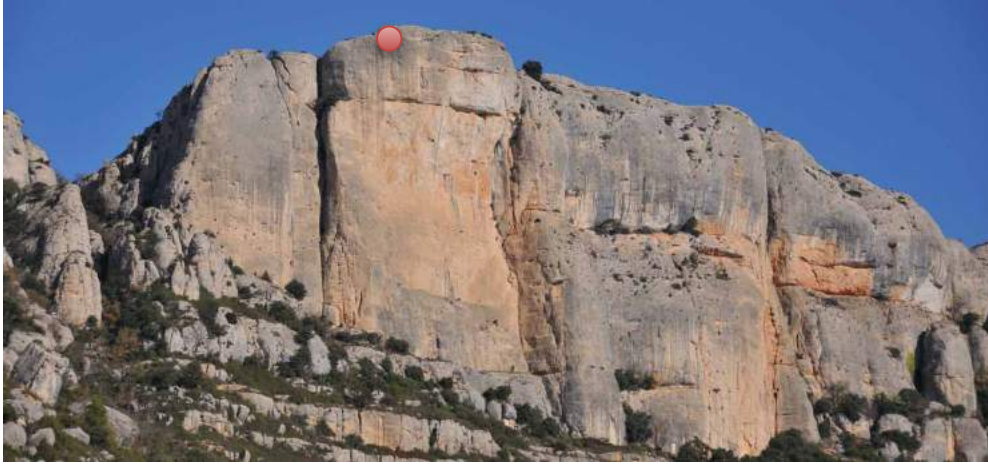
Very large overhang, nice canopy ride and tight landing. **Caution! do not land in surrounding fields, there are vineyards with hanging barbed wire, dangerous for you and your canopy.**



Landing area and vineyards

La Falconera

This is the first jump opened in the province of Taragona. The first jump was made on December 13, 2012 by David Guti, Richi Navarro, Óscar Cacho and Turko Ortiz.



Access

From Morera de Montsant you can park the car or before arriving at the town there is a small parking on the left, with some tables and a fountain. The fields nearby fields will provide a landing area.

Approach

The path is indicated and obvious. The first part of the path is cement and later cobblestones. You will find a fork where going right will take you to the top of Falconera (a good reference will be that you will be able to see Falconera from the path the whole time) using a channel that goes up and to the left. The path will be indicated with red and white markings as well as stones. Once at the top of Falconera the exit will be a little to the right, looking down to the the landing area (there is a wall to the lower left, be careful of off-heading openings in that direction, as the wall is very close).

Coordinates approx: 41°16'24.69"N 0°50'48.04"E



Trailhead and right hand turn



Main Path

Channel towards la Falconera

Material

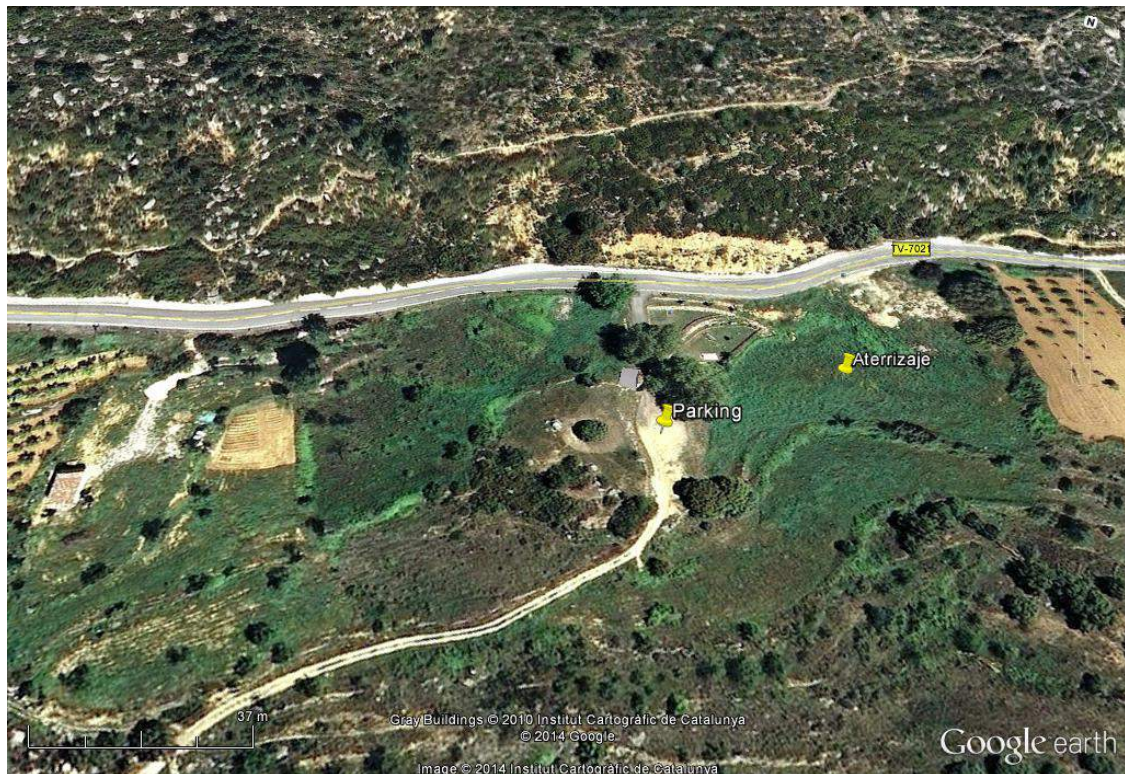
None

Height

Approximately 120m (390ft).

Landing

The fields clearly seen from the exit (there will be no doubt if you parked the car there).



Landing area and parking before town (tables and fountain)

Return

None or walk to parked car in town.

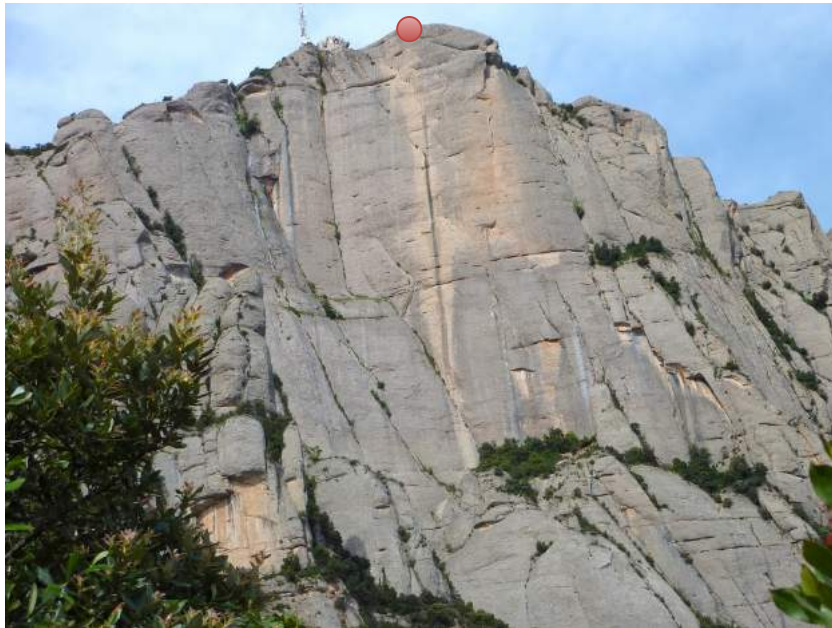
Montserrat





Paret de l'Aeri

Because this is a Natural Park and BASE jumping is prohibited.



Access

Either from Manresa or Igualada, take the road in the direction of the monastery of Montserrat, but leave the car before you arrive in the refugio of Santa Cecilia parking lot.

Approach

Take the path to the right of the wall (looking at the wall), taking the Sant Jeroni channel. Once in the pass, take the path the left which will take you to the Sant Jeroni antennas, where you will jump over a gate to gain access to a spectacular exit. The exact location of the exit is marked by very old attached ropes.

Material

None.

Height

Approximately 300m (985ft).

Landing

On various roads at the base, or in the fields surrounding the Monistrol de Montserrat, the town below the talus.

Return

Obvious.

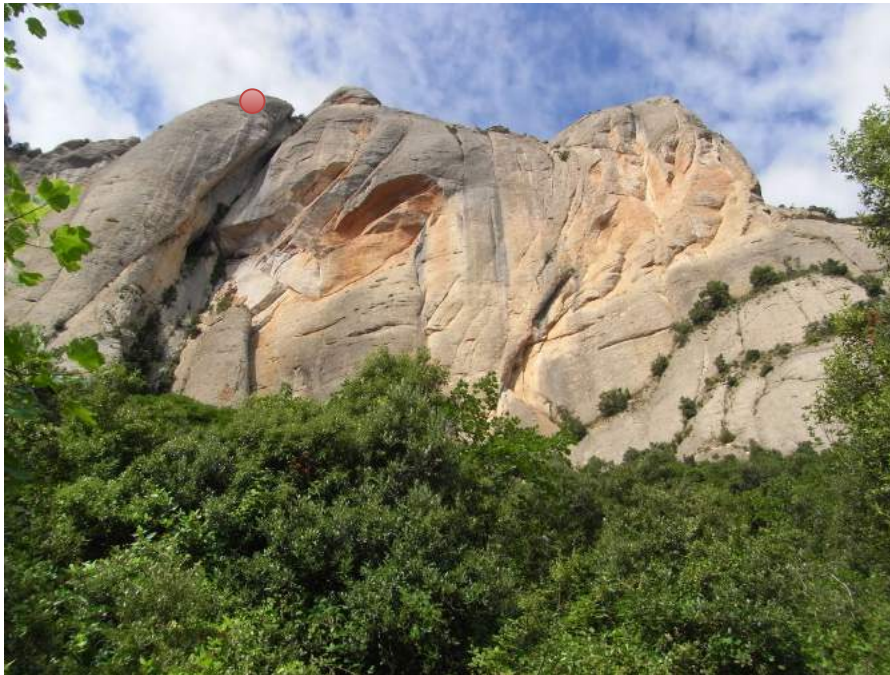
Observations

Lots of vertical. One of the best advanced wing suit jumps in Spain.



Diablos

Because this is a Natural Park and BASE jumping is prohibited.



Access

From the parking lot of Santa Cecília take the road towards the monastery, before the tunnel take the road to the right, continue until you are below Cavall Bernat and go up the channel to the left. Once on top go right along the edge of the wall passing thru the refugio of St. Antoni, then continue a bit more until you are on top of del Plátano. There you will find a chain to climb down to the exit platform.

Approach

1 hour 15 min

Material

None.

Height

Approximately 200m (655ft).

Landing

On the road to Sta. Cecília.

Return

None.

Observations

It is recommended no more than 2 seconds of freefall because the wall tapers towards the base and can create a dangerous situation.



Cavall Bernat Old

Exit opened by Albrecht with help from los escaladores Albert and Aniol on May 18, 2010. **This is a Natural Park and BASE jumping is prohibited.**



Access

The same as Paret de l'Aeri.

Approach

Hike up to the base of the south face of Cavall Bernat along the Cavall channel. From the west pass, climb the *vía Normal al Cavall Bernat (V)*.

Material

Climbing gear.

Height

Approximately 100m (328ft) to impact. Up to 900m (2953ft) with wing suit.

Landing

The same as Paret de l'Aeri.

Return

Obvious.

Observations

This is the most well known peak of the Montserrat mountain range.



Cavall Bernat New

Exit opened by François Gouy and Bertand Givois in December 2013. **This is a Natural Park and BASE jumping is prohibited during nesting season.**



Access

The same as the Paret de l'Aeri jump.

Approach

Hike up to the base of the south face of Cavall Bernat along the Cavall channel. From the west pass, climb the *vía Normal al Cavall Bernat (V)*. New wingsuit exit from the north vertical face and over the *vía Puigmal*. To access the exit you have go around the east side of the Cavall using the shelf a few meters from the top (you don't have to go all the way to the top).



Pictures by François Gouy

Material

Climbing gear.

Height

Less than 80m (262ft) to impact. With wingsuit up to 900m (2953ft).

Landing

The same as the Paret de l'Aeri jump.

Return

Obvious.

Observations

The most emblematic minaret of the Montserrat range.



Chana's Exit

Located in the Agulles area (Montserrat). Opened by Enrique Pastor, Richi Navarro, Hubert, Albrecht and Martin on March 28, 2010, with the help of climbers Albert and Aniol. **This is a Natural Park and BASE jumping is prohibited.**



Access

From can Massana head towards refugio de Agulles, up the “les Bessones” channel until reaching the north face, there is a small climb to the “Miranda dels Ossos” peak.

Approach

1h 15 min

Material

None.

Height

Approximately 140m (460ft)

Landing

Obvious roadside parking.

Return

20 min to can Massana.

Observations

Exit and landing wind conditions differ. It is highly recommended to have someone at the landing site to relay landing area wind conditions.



Agridulce

Located in the Agulles area (Montserrat). Opened by Enrique Pastor and Richi Navarro on April 9, 2010. **This is a Natural Park and BASE jumping is prohibited.**



Access

From can Massana head towards refugio de Agulles, after passing Portillón take the path that goes up on the left, ascending thru channels with affixed ropes. Once on top continue to the right down a small channel that later goes up and puts you on top of the exit point, which is obvious.

Approach

1 hour

Material

None.

Height

Approximately 100m (328ft).

Landing

The same as Chana's exit.

Return

20 minutes.

Observations

The same as Chana's exit.



Pich Exit

Located in the Agulles area (Montserrat). Opened by Enrique Pastor and Albrecht March 14, 2010, with the help of climbers Albert and Aniol. **This is a Natural Park and BASE jumping is prohibited.**



Access

From can Massana parking head towards refugio de Agulles, and continue east up the “Agulla Máquina de Tren” channel until you are atop of “Agulla Dues Punes” on the left, from there you have to climb a 20m plate, once on top head to the northern most point. There is a short 15 meter rappel to a small shoulder where you will find the exit.

Approach

1h 30 minutes

Material

Climbing gear.

Height

Approximately 120m (394ft).

Landing

The same as Chana’s y Agridulce

Return

20 minutes

Observations

Be careful due to differing wind conditions between the exit and landing.



Frare Gros

Located in the Agulles area (Montserrat). Opened by Luís Manzaneda and David Guti in June 2015. **This is a Natural Park and BASE jumping is prohibited during nesting season.**



Access

Park nead the Can Massana, in the Agulles de Montserrat region.

Approach

To reach the top of Frare Gros there is a 10 meter exposed but easy chiminy on the south face. Jump from a removable metal platform. It's important that you go back up to the platform and remove it, due to its proximity to a climbing route and we don't want to disturb the climbers. Plus you have to rappel 20 meters down to the place the platform. For information on the location of the platform (hidden near the exit) contact AESBASE.

Material

Climbing gear and a hammer for the platform.

Height

Approximately 200 meters (656ft).

Landing

On the road that goes to the El Cassot restaurant.

Return

Walk down the road.

Observations

Vertical jump with a landing on a narrow road.

Pedraforca



Gresolet

Exit opened by Emilio De Bricio and Enrique Pastor on April 2, 2006.



Access

Located at the Gresolet del Pedraforca viewing area between Gósol and Saldes.

Approach

None.

Material

None.

Height

Approximately 90m (295ft).

Landing

Path.

Return

It's necessary to shuttle a car below.

Observations

Pay attention to possible high winds in the valley.

Sant Llorenç de Montgai



Cilindre

Exit opened by Richi Navarro, Oscar Cacho and Turko Ortiz on October 22, 2012.



Access

Two options:

- With driver or two cars: From Sant Llorenç de Montgai take route LV-9047 towards Camarasa. After a few minutes you pass directly below the Cilindre wall, continue on to the Mordor wall (where Sanllor exit is located). Continue on the road between the walls and the dam until you reach a road that takes you to the ermita de Montalegre. Take the road (skirts the back side of the walls) for about 800m before a tight right curve. To your left is the trailhead. Park one of the cars here.

- Without driver: Leave the car in the parking lot directly below the wall.



Path towards the ermita de Montalegre

Approach

- Without driver about 35': take the road to Montalegre, just before a vehicle intersection there is a trailhead (marked in yellow in the photo) that shortcuts the trail, in minutes you will reach a trail on the left that the climbers use on their return from

the vías, continue straight on the marked trail heading NW atop the road that is parallel to your left. After about 100m before the end of the trail (ending at Montalegre) on the left marked by a stone there is a path that will take you to Cilindre as you pass by the other exit Sanllor. You can't get lost and in a few minutes you are at the highest point.

- With driver about 10': Begin at the trailhead and in about 100m on the right, (marked in red in the photo) continue the climbers path to the top. Very easy.

Coordinates approx: 41°52'25.72"N 0°50'39.62"E



Plan showing car and foot access

Material

None.

Height

Approximately 100m (328ft).

Landing

On the road. Please note the telephone and power lines running parallel between the road and dam, on the landing area there are three posts, two of them have tension cables that cross the road towards the talus. The third one has none. These posts delimit your landing from both directions of the road. In the direction of the town a few meters from the parking lot and towards Camarasa it's about 150m from the parking lot.



Landing area delimited by power lines. Recommended landing direction



Post with tension cable that crosses the road

Return

None or to the car.

Observations

Overhung jump and tight landing. **Be careful of vehicles (from atop you can see if cars are approaching) and with two tensor cables the landing area is limited.**

Sanllor

Jump located in Sant Llorenç de Montgai (Lleida), on Mordor wall. Opened on June 29, 2009 by Richi and Emilio.

Access

Same as Cilindre.

Approach

Same as Cilindre, the exit is before Cilindre (marked by a stone) and its on top of a fin shaped protrusion.

Material

None.

Height

Approximately 75m (246ft).

Landing

On the road, but as a reference, since it is a little left of Cilindre use the tensor cable on the left to decide your landing.



Tensores and recomendación de tráfico para aterrizar

Return

None or to the car.

Observations

Very low and overhung jump with tight landing.

Serra de Boumort



PessoNone

Exit opened by Richi Navarro and Mireia Miró in April of 2014.



Access

From Pobla de Segur towards Gerri de la Sal, after crossing the N260 road bridge, take the secondary route in the direction of Claverol-Hortonedá. About 10km in the direction of Hortonedá take a right onto a forestry access route (driving prohibited, Natural Park, marked with a sign). After about 4km on this road park the car.

Approach

Take a small path not the right that starts next to a small pond. This path will take you to the base of Roc de Pessonada. After about 1.7km you will find the exit. The landing site is directly in front.

Material

A small rope to help you climb down the exit is recommended, but not needed.

Height

Approximately 180m (590ft) to impact and 485m (1590ft) down slope to the landing.

Landing

Obvious.

Return

From the landing to the town of Pessonada (about 3.6km).

Observations

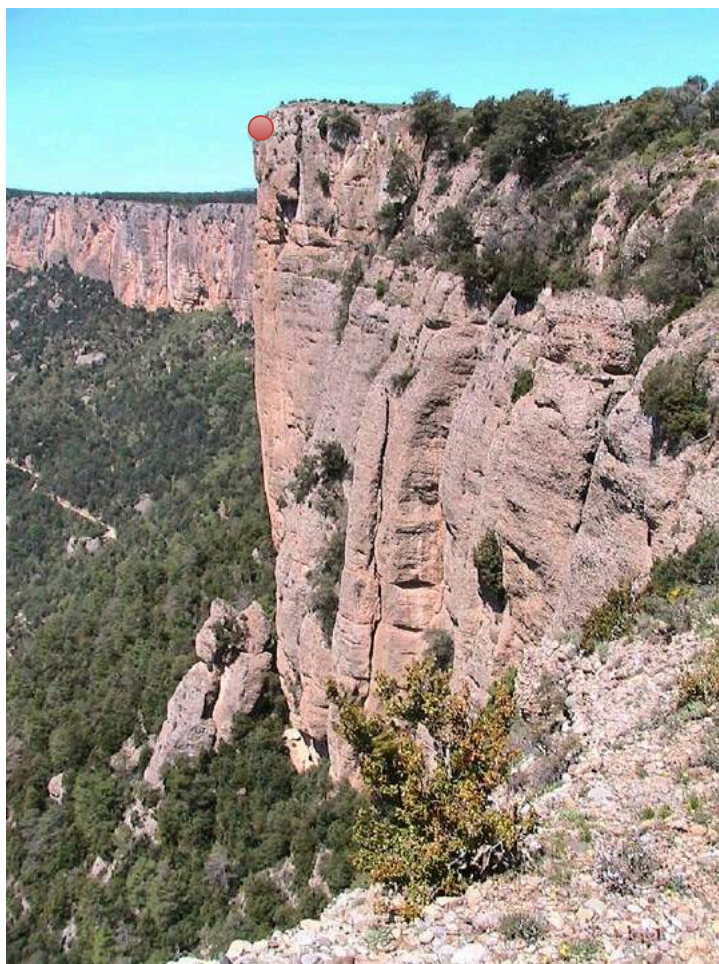
Regardless of the altitude, this jump is slider-down. Towards the bottom the wall becomes positive.

Serra de Busa



Busa

Exit opened by Turko Ortiz and David Fusté in April of 2014, with collaboration from Marcel, Edu Plana and Vicenç Carabassa, in the Serra de Busa in the heart of Solsonés region. The first BASE jump on the Solsonés wall.



Access

From Solsona head towards Serra de Busa. You will park high in Serra de Busa, on a plateau atop the walls, at the end of a road where motorized vehicles are not permitted from going further.

Approach

You will access the edge of the walls on the south slope of the mountain. From there you will see the exit that is an overhung spur to your left. Continue along the edge until you reach the exit, which is about 10 meters below the peak, a stone ledge that juts out over the overhang spur.

Material

Rope to get down to the exit.

Height

Approximately 110m (360ft).

Landing

In the open fields clearly visible below the jump.

Return

From the landing, there is no trail, head upwards until you find the road at the base of the wall. If you did not shuttle a car, no choice but to head left across the whole wall and climb back up the to the top of the mountain, where the car is parked.

Observations

Overhung jump and good landing.

Serra de Sant Gervàs



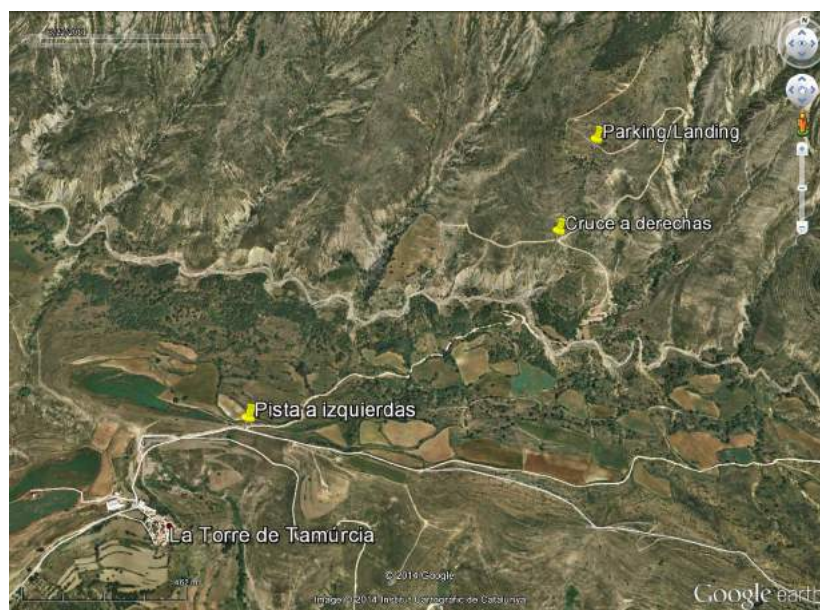
Sant Gervàs

Exit opened by Erich Beaud and Dominique Gleizes on March 5, 1990. On June 16, 2007 Enrique Pastor and Hubert opened another exit slightly before the first one.



Access

The best option (there is another from Adons, but you need a committed driver...) is from Puente de Montaña on route N-260 towards Pont de Suert (about 14km) and before Sopeira take the road towards Torre de Tamurcia to the right. After the town of Espulga de Serra you will pass barn on the left and then take a left, continue on this road then take a right at the next intersection. Continue on this road until you find a meadow where you will park.



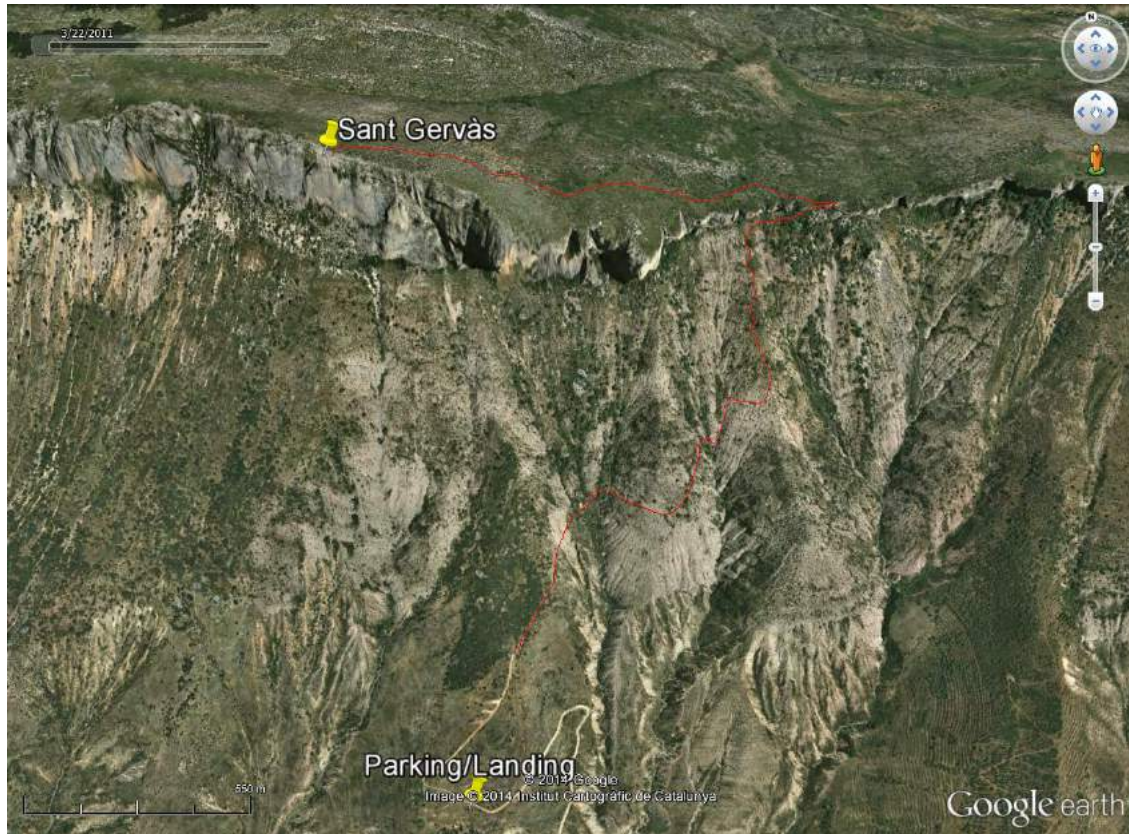
Access to the Parking/Landing area and approach start

Approach

2h 30' (about 3.5km)

From the meadow you will find a well marked path that takes you to the top. Once on top head E (the path is not well marked, a good option is to follow the edge until you reach the exit). The vertical wall is orange colored.

Coordinates approx: 42°18'59.68"N 0°48'34.89"E



Trail to the top and approximate exit location

Material

None.

Height

Approximately 220m (722ft) and 750m (2460ft) downslope to the landing.

Landing

The fields where the car is parked or on the trail.

Return

None.

Observations

Semi-overhung jump with good landing.

Siurana



Salt de la Reina Mora

Exit opened by David Guti, Luís Manzaneda, Turko Ortiz and David Fusté in February of 2014. With help from Ángela Riba, Helen and Israel Rodríguez.



Access

From the town of Cornudella de Montsant head towards the town of Siurana. Park there.

Approach

Walk towards the Siurana castle ruins, about 2 minutes from the parking. The exit is behind the largest wall at the very foot of the castle, there is a small rock outcropping barely enough room for two feet for a good launch.

Material

Static line or PCA jump recommended. You will need anchoring gear for the person who will be PCAing or assisting, the exit platform is not very accommodating.

Height

Approximately 60m (197ft).

Landing

At the tail end of the dam. Depending on the water level, there will be more or less landing area.

Return

Hike up a path that flanks the walls. You will need a driver to pick you up if you don't want to hike all the way to the top.

Observations

Mythical jump regarding the legend of the "Reina Mora" (Moorish Queen). Slightly overhung.

Siuranella

Exit opened by Luís Manzaneda and María McFly early in 2015.



Access

Park in the lot used for climbing Siuranella, halfway between Cornudella de Montsant and Siurana.

Approach

Ascend thru a canal between the climbing areas of a Herbolari and Siuranella. Once at the top of the canal, go right on a poorly marked trail going up thru some rocks. From there take the obvious route that borders the wall until you reach a spot above the exit point. The exit point is located by climbing down 5 meters, you will find a triangular shaped rock.

Material

None.

Height

Approximately 68 meters (223ft).

Landing

On the road after the 180 degree curve.



Return

You are on the road where you parked.

Observations

Be careful of the power lines in the landing area.

Ceci

Exit opened by David Fusté with help from Ceci Aguirre in October 2015.



Access

Park in the Herbolari climbing lot, on the road between Cornudella de Montsant and Siurana.

Approach

Head towards the Herbolari climbing area, until you find a path that borders the wall below the jump and takes you towards Grau de la Tallada all the way up to the exit along the same path.

Material

There are two small rock bridges at the exit point, where you can attach a static line if no one is available for pilot chute assist. 10 meters of rope is sufficient.

Height

Approximately 50 meters (164ft). 260m (853ft) distance and 130m (427ft) of altitude to the landing.

Landing

On the road.

Return

You land on the road where you parked.

Observations

Can only be jumped static line or pilot chute assist.

Tavertet



Tavertet

Exit opened by Richi Navarro, Mireia Miró and David Fusté with help from Roger Freixas and Ariadna Prat in November 2014 on the Tavertet cliffs.



Access

From the town of Tavertet, head towards the “Cingles de Tavertet” (cliffs of Tavertet) and make a left on the road in the direction of Rupit that follows the edge of the “Cingles de Tavertet”. In a few kilometers you will arrive at the Avenc restaurant. Park there.

Approach

Look for the edge of the wall, in the fields in front of the restaurant. In 10 minutes you will reach the exit.

Material

None.

Height

Approximately 80 meters (262ft).

Landing

In the fields that are visible at the bottom of the valley, about 45 degrees to the right of the exit.

Return

Ideally have someone to pick you up. Otherwise, you have to climb back up to the exit.

Observations

The canopy pattern is very tight. Ideal conditions are needed to get to the landing areay (any head wind and you will not reach the landing). Beware the large number of brambles at the landing area.

Terradets



Amanita

Exit opened by Turko Ortiz and David Fusté in January of 2014 on the Amanita wall, to the left (facing the wall) of the les Bagasses wall.



Access

There is a famous parking lot on the Terradets narrows, directly below the walls. The parking lot is located a few kilometers south of the town of Cellers. Characterized by a large fountain with three large pillars forming a pyramid.

Approach

The only way to get to the exit is to climb. There are various ways to get to the final exit platform on the Amanita wall. The easiest is to climb the Amanita Muscata route (6a+) until the penultimate intersection, where you take a left turn until you reach the exit.

Approximately 45 minutes to get to the foot of the route, then add what each individual takes to climb it.

Material

No gear necessary for the actual jump (but be very careful getting situated on the exit).

Height

Approximately 180m (590ft) and about 300m (984ft) downslope to the landing.

Landing

The same parking lot where you left the car.

Observations

Slightly overhung with a good landing.

Gaspatxo

Exit opened by Adrian Gómez and David Fusté in October 2015 on the wall of contrafort de Peladet, in front of the Font de les Bagasses.



Access

The same as Amanita.

Approach

From the parking lot at the Font de les Bagasses walk along route C-13 in the direction of Tremp. 100 meters past km 71, head up along a canal on the right side of the road, climbing over metallic fences along the road. Continue on the canal until you reach the first stone plaza. Continue along the canal to a second stone plaza. From there leave the canal in a diagonal direction upwards and to the right until you reach the exit.



Material

None.

Height

Approximately 120 meters (394ft).

Landing

The same as Amanita.

Observations

Overhung exit with a good landing.

Vilanova de Meià



Roca dels Arcs

Exit opened by Richi Navarro and Óscar Cacho in May of 2013 on the Roca dels Arcs wall.



Access

Find the town of Vilanova de Meiá (Lleida). From there, take the road towards Tremp, which will take you directly to the wall zone. About 6km past the town you will reach Roca dels Arcs, perfectly visible from the car.

Approach

Park at the side of the road. About 200 meters after crossing a bridge below a large ceiling, you can reach the top using a climber descent path (located on the northeast slope of the wall). Once on the edge of the wall, before reaching the center peak, you must skirt a long turn a few meters below the peak. When you get midway across the wall, directly in the middle of the vertical wall (near the end of the climbing route called Fase Terminal), you will find a single parabolts (don't confuse this one with parabolts where climbing routes unite on the same turn). From this parabolts you will rappel down 30 meters to the exit platform.

About 30 minutes.

Material

Gear for 30 meter rappel.

Height

Approximately 150m (492ft) and about 400m (1312ft) downslope to the landing.

Landing

There are many options. The easiest, two fields with no vegetation located a bit to the left of the jump.

Return

From the landing site there is a path that takes you to the road where you parked.

Observations

Slightly overhung jump with a good landing.

Roca Alta

Exit opened by Richi Navarro and Óscar Cacho in May of 2013 on the Roca Alta wall.



Access

Find the town of Vilanova de Meiá (Lleida). From there, take the road towards Tremp, which will take you directly to the wall zone. About 4km from the town, a few meters before arriving at Font de la Figuera, take a left. Drive down this road for about 6km until you pass a cabin on the right, and then take a right. Continue this road to the end, you will find a small plaza where you can park.

Approach

From the parking lot there is a well stone marked trail that leads to the top along the left side of the wall (facing it). There is a short rope attached to a parabol to gain access to the exit (you can descend to the exit step without the rope), very close to the climbing route called escalada Amadeus.

Approximately 30 minutes.

Material

A short 3 meter rope in case the climb down to the exit is not obvious.

Height

Approximately 100m (328ft) and about 300m (984ft) down slope to the landing.

Landing

The same parking lot where you left the car.

Observations

Vertical jump with a tight landing.

Hermes

Exit opened by Mireia Miró, Turko Ortiz and David Fusté in January of 2014 on the Roca Alta wall.



Access

Find the town of Vilanova de Meiá (Lleida). From there, take the road towards Tremp, which will take you directly to the wall zone. About 4km from the town, a few meters before arriving at Font de la Figuera, take a left. Drive down this road for about 6km until you pass a cabin on the right, and then take a right. Continue this road to the end, you will find a small plaza where you can park.

Approach

From the parking lot there is a well stone marked trail that leads to the top along the left side of the wall (facing it). You have to keep going along the wall until you get to a second wall, right at the edge, to the right of a tree you will find the exit. Approximately 40 minutes.

Material

A short 5 meter rope in case the climb down to the exit is not obvious.

Height

Approximately 100m (328ft) and about 400m (1312ft) down slope to the landing.

Landing

Clearly visible field below the jump.

Return

From the landing head up towards the car, always staying on the bottom of the valley where the vegetation is less dense.

About 20 minutes.

Observations

Slightly overhung jump with a good landing.

Pas Nou

Exit opened by David Fusté in June 2015 on the Pas Nou wall.



Access

Same access as the Roca dels Arcs jump.

Approach

Approach along the base of the wall towards the right (facing the wall) to later turn left to reach the exit.

Approximately 30 minutos.

Material

None.

Height

Approximately 70 meters (230ft)

Landing

On the same road where you parked.

Observations

Very overhung jump with a tight landing.

Pilar del Segre

Exit opened by Richi Navarro and Óscar Cacho in May of 2013 on the Pilar del Segre wall.



Access

The same access as the Roca dels Arcs jump.

Approach

Same approach than Pas Nou jump to later turn right to reach the exit.
About 30 minutes.

Material

None.

Height

Approximately 100m (328ft) and about 250m (820ft) down slope to the landing.

Landing

On the same road the car is parked.

Observations

Large overhung jump with a tight landing.

Solo Ansia

Exit opened by David Fusté in September 2015 on the Pilar del Segre wall.



Access

Same access as the Roca dels Arcs jump.

Approach

Same as the Pilar del Segre jump.

Material

None.

Height

Approximately 80 meters (80ft) and about 250 meters (820ft) slope to the landing.

Landing

On the same road where you parked.

Observations

Large overhung jump with a tight landing.

Pina Mona

Exit opened by Turko Ortiz and David Fusté in December of 2013 on the Paret del Temps wall.



Access

Find the town of Vilanova de Meiá (Lleida). From there, take the road towards Tremp, which will take you directly to the wall zone. After about 5km you will reach Font Blanca. Take the road to the right and after about 3km you will reach large fields in front of the Temps wall, where you will find the jump.

Approach

Park at the landing site and hike up to the top along the right side of the wall (facing it).

About 20 minutes.

Material

None.

Height

Approximately 100m (328ft) and about 200m (656ft) down slope to the landing.

Landing

Any of the fields in front of the jump.

Observations

Very large overhung jump with a good landing. Recommend hand held pilot chute (46" or 48") to make sure you reach the landing area.

Paret del Temps

Exit opened by Ramon Maeso and David Fusté in September 2015 on the Paret del Temps wall.



Access

Same as the Pina Mona jump.

Approach

Same as the Pina Mona jump.

Material

None.

Height

Approximately 80 meters (262ft).

Landing

In any of the fields in front of the jump.

Observations

Cova de les Monges

Exit opened by Ramon Maeso and David Fusté in September 2015 on the Paret del Temps wall.



Access

Same as the Pina Mona jump.

Approach

Same as the Pina Mona jump.

Material

10 meter rope in case the existing one is very old.

Height

Approximately 80 meters (262ft).

Landing

In any of the fields in front of the jump.

Observations

Zarathustra

Exit opened by Ramon Maeso and David Fusté in June 2015 on the Paret de Zarathustra wall.



Access

From the village of Vilanova de Meià (Lleida), take the road towards Tremp that will take you directly to the walls. The parking lot will be about 6 km from the town and in front of the wall.

Approach

Approach the top of the wall from the left (facing the wall).
Approximately 30 minutes.

Material

None.

Height

Approximately 100 meters (328ft) and about 250 meters (820ft) slope to the landing a distance of 440 meters (1444ft).

Landing

Any of the fields in front of the jump or on the road.

Observations

Slightly overhung and good landing.

H.E.U.R.A

Exit opened by Ramon Maeso and David Fusté in September 2015. Hasta El Último Reducto Antiparkes (H.E.U.R.A. - Until the Last Antiparks Redoubt).



Access

From the village of Vilanova de Meià (Lleida), take the road towards Font Blanca, and from there you will see the wall.

Approach

Approach the top of the wall from the right (facing the wall).
Approximately 30 minutes.

Material

None.

Height

Approximately 90 meters (295ft).

Landing

In any of the fields in front of the jump.

Observations

Slightly overhung and good landing.

Paret dels Atacs

Exit opened by David Fusté in September 2015 on the Paret dels Atacs wall.



Access

From the village of Vilanova de Meià (Lleida) take the road towards Font de l'Hedra, where you can park and see the wall.

Approach

Take the path that takes you up to Cogulló, and about half way up, at the same level as the wall, head right on an unmarked trail and look for the exit. Approximately 30 minutes.

Material

None.

Height

Approximately 70 meters (230ft).

Landing

In any of the fields in front of the jump.

Observations

Vertical jump with a good landing.

Pòtul

Exit opened by Ramon Maeso and David Fusté in November 2015 in the Cova dels Atacs.



Access

From the village of Vilanova de Meià (Lleida), take the road towards Font de l'Hedra, where you can park and see the wall.

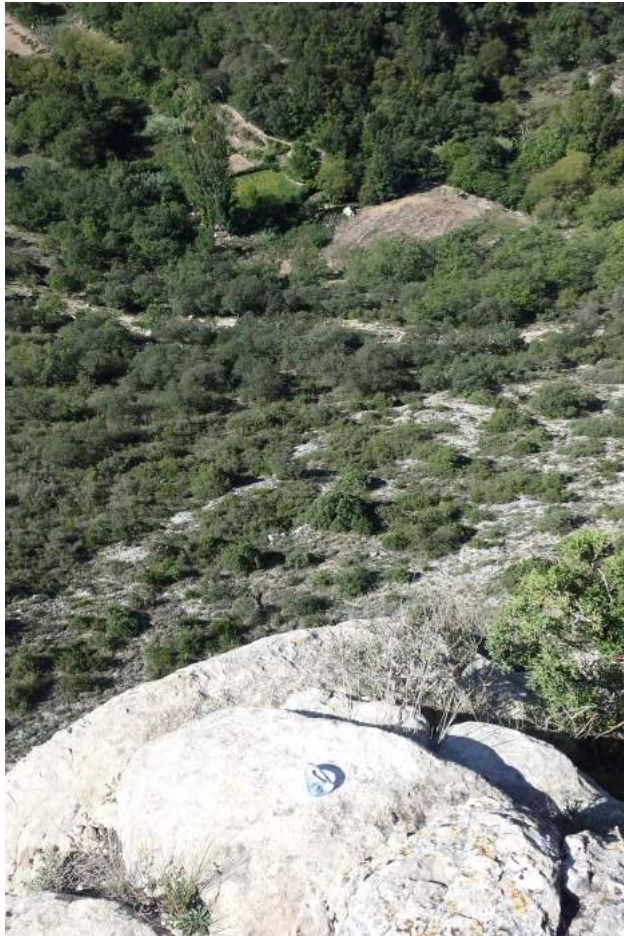
Approach

Take the path that takes you up to Cogulló, and about half way up, at the same level as the wall, head right on an unmarked trail and look for the exit.

Approximately 15 minutes.

Material

Static line material. There is a parabolts at the exit.



Height

57 meters (187ft).

Landing

The first field you can see from the exit just around 30 degrees to the right of the jump.



Observations

Be carefull at the landing, it's smaller than it seems and has lots of obstacles that are not evident from the exit.

Rúbies

Exit opened by Richi Navarro en Abril de 2015 in the Montsec area in front of the town of Rubies.

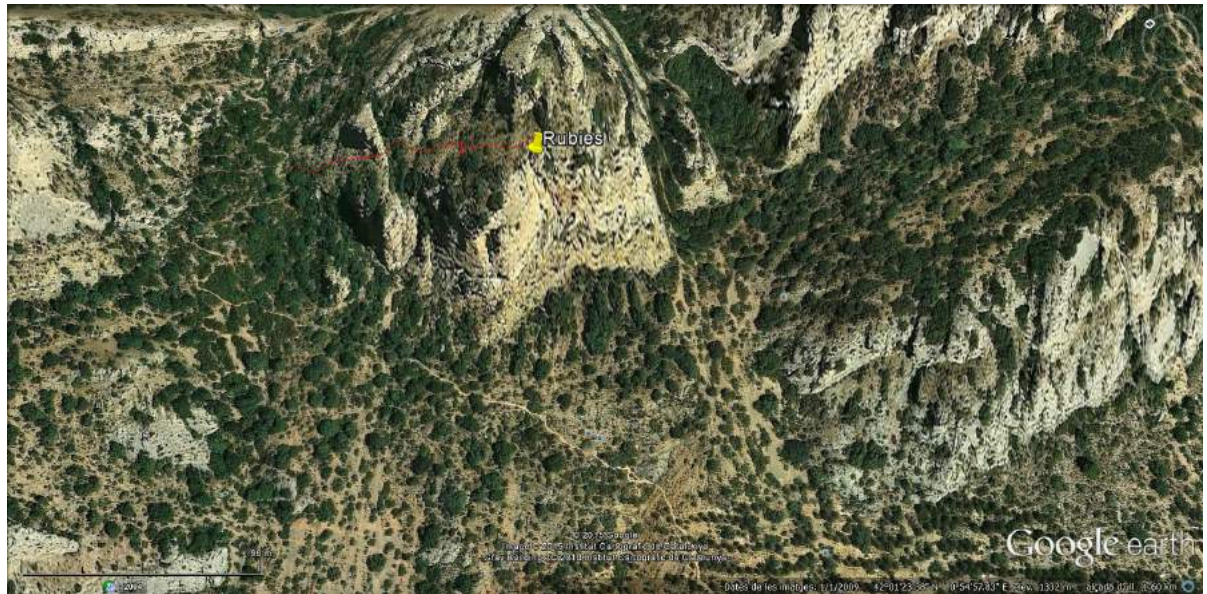


Access

From the village of Vilanova de Meià (Lleida), take the road in the direction of Tremp which takes us to the walls. After about 4km from the town you will arrive at an intersection. Make a left and after a some kilometers the road takes you to the town of Rúbies.

Approach

Park in the landing area and approach the wall from the left (facing it), via the famous Portella Blanca pass. Leave the path about half way up and go to the right bordering the foot of the wall. This will take you up to the exit. The path is not well defined but will be marked by stone markers. The exit is also marked with a stone marker.



Material

None.

Height

Approximately 100 meters (328ft).

Landing

In the same parking.

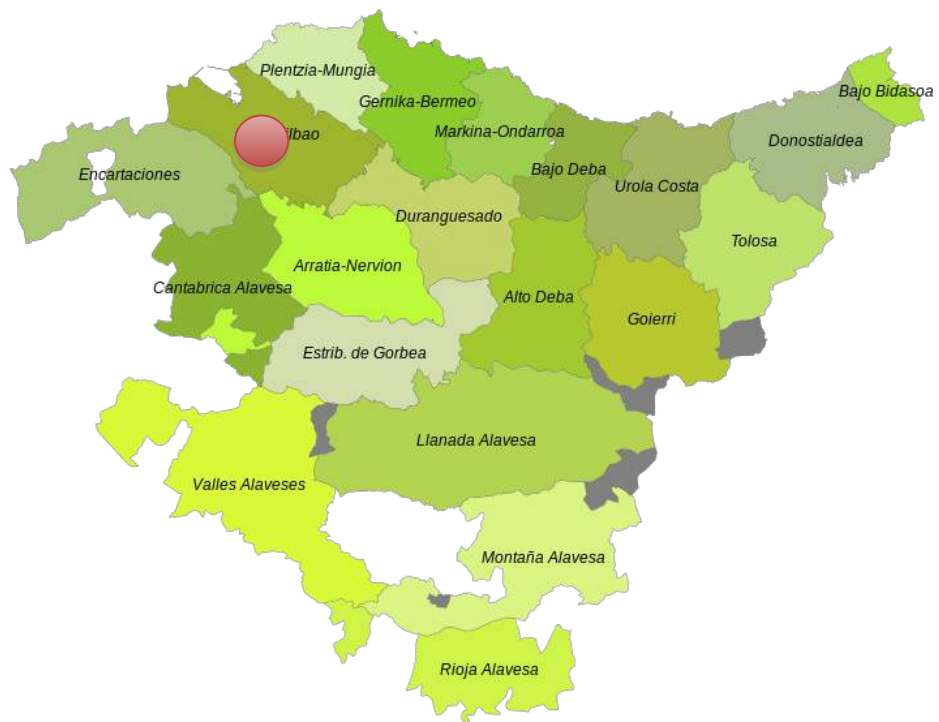
Observations

Exit is slightly overhung.

País Vasco



Ranero



Balcón del Durduz

Exit opened by Patrick Guisasola.



Access

2km past Ambasaguas (141m) towards Concha de Karrantza there is a road that heads to the Ranero neighborhood (364m). Continue on this route for 1.5km and you will reach the Pozalagua caves (426m).

Approach

From here a sign posted trail takes you up (N.W.) to the small port of Valseca (657m), to the right of Peña Ranero or Picón del Carlista (729m). A sign posted trail will help you reach, thru a detour, the top. Head across it on the left side towards the northeast staying off the field of rocks at the higher elevation. Continue until the valley opens, then skirt the forest to the left. After the next pass, head downwards along the grass until you reach the remains of an old dock. Next to the dock there is a field large enough for several people to pack, at the same time it serves as an exit, while losing 5 to 6 meters. The exit is at the last reunion of the “Beti Bakarrik” route.

Material

None.

Height

Approximately 100m (328ft) to impact, 250m (820ft) to the landing, 400m (1312ft) if you want to go all the way to the bottom.

Landing

The first landing site is pretty good; the field has a slight incline with knee-high grass.

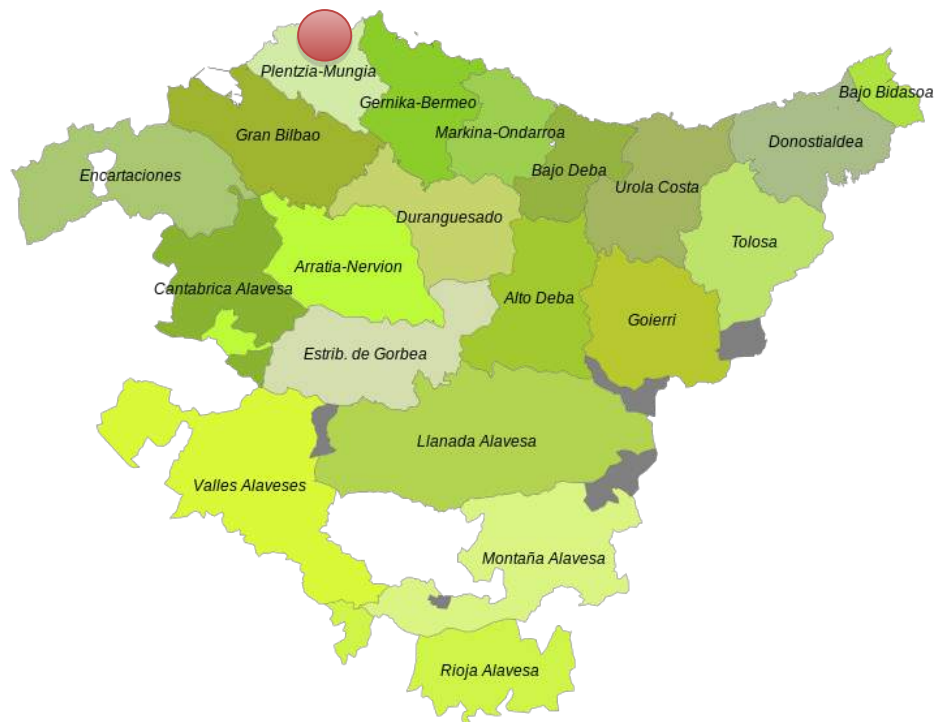
Return

Descend down the valley if someone is picking you up, or skirt the walls towards the southeast on the climbers trail. Well after leaving the wall ascend to the Cuevas de Pozalagua parking lot where you led the car.

Observations

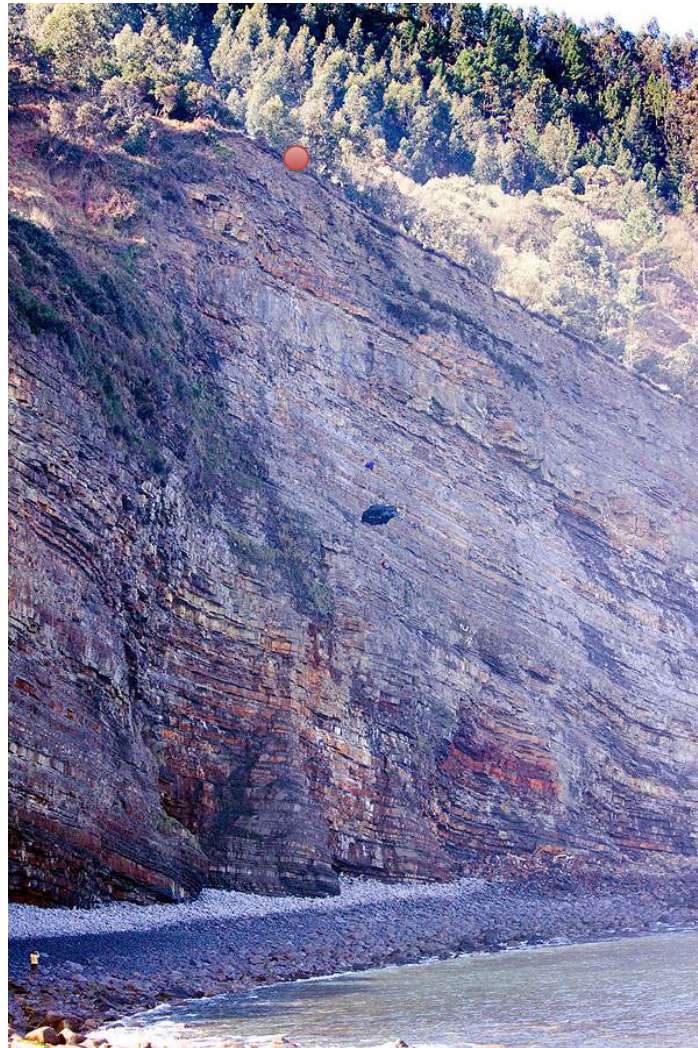
Vertical jump.

Armintza



El Point

Exit opened by Patrick Guisasola in March of 2012 on the central wall of “Kala Basordas”.



Access

From Bilbao head towards Mungia on route BI-631, from there take the road to Armintza along Andrakas heights. In Armintza, cross the town and head towards Bakio. After about 7km and passing an abandoned nuclear site, at the end of the rise on a right curve you will see a house on the left. Park between the house driveway and a wooden 3-crossbar gate. Do not block the road, because it is frequently used by the owner as well as surfers and local fishermen, and you want to be as discreet as possible.

Approach

Take the trail and at the first intersection head down (to the right), at the second intersection head towards the sea downwards (to the left). At the third intersection decide if you want to check out the landing site or head to the exit point.

In case of the latter, take a left and you will see a paved trail. After about 100 meters and the trail curves left, go right and descend thru some eucalyptus trees towards the sea (slightly to the west). 40 more meters down and the exit is on the right.

Material

None.

Height

Approximately 73 meters (240ft).

Landing

There are two options. The first, you can land in the water, but its not advisable, since it is a bay with large boulders and there tends to be large waves, not to mention the problem of getting your gear wet with salt water.

The second option, if you open between 40-45 meters you have enough height to make a 90 degree right turn and reach an area with small rocks, the size of tennis balls, more desirable than the pumpkin and melon size rocks below the exit.

Return

Towards the east along the beach there is a trail the fishermen and surfers use that zigzags up the mountain, where you will reach the the intersection where you decide to go to the landing or exit.

Observations

Vertical jump, dangerous due to possible water landing.

Vamos a la Playa

Jump opened on the Arminza wall north of Bilbao by Laurent Le Cléach around 1990.



Access

From Bilbao head towards Plentzia to arrive at Arminza.

Approach

In Arminza take a trail that starts at a portal that takes you to the top of the walls via a final comeback by grassy slopes.

Material

None.

Height

Approximately 160m (525ft).

Landing

Very tricky over large rocks.

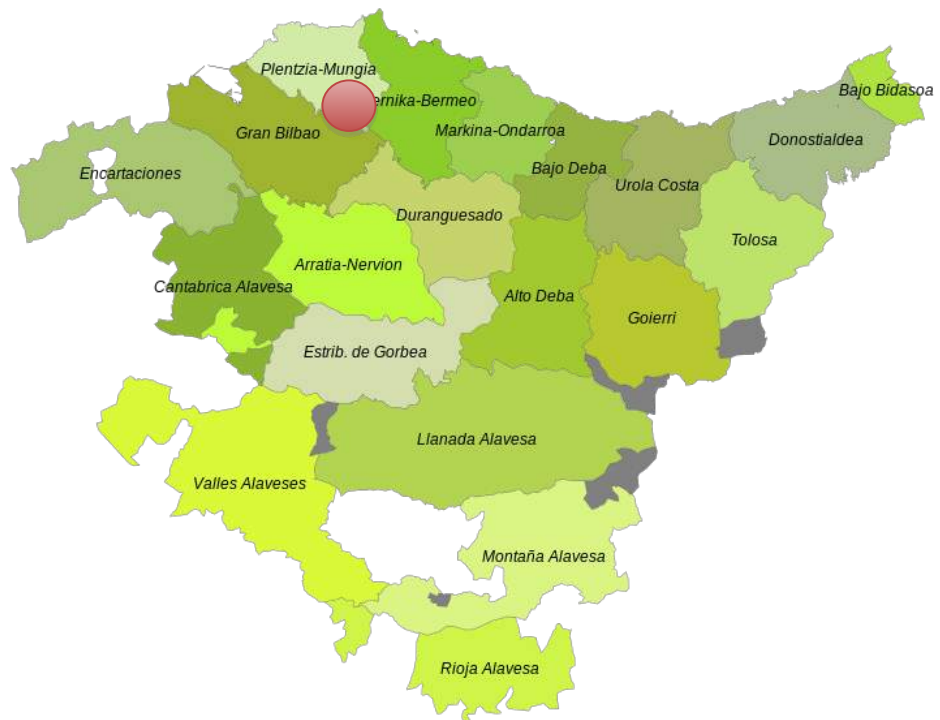
Return

There is no established trail but you can ascend along the side taking advantage of the vegetation.

Observations

?

Atxarte





Balcón de Andrómeda

Exit opened by Txirrita in March of 2014. **Due to this being a Natural Park, BASE jumping is prohibited.**



Access

From the town of Abadiño, take the road towards the valley of Atxarte. Pass the quarries and continue on the cemented road. When it ends, continue on the gravel road. After passing a couple of farmhouses, park on the shoulder in front of an intersection with signs that say “Gurezelai”.

Approach

From the car ascend up to “Gurezelai”, and continue on the trail towards the Artola pass, passing by a livestock fence. (The landing site is a bit further up towards POL-POL). From the Artola pass head up to the top of Alluitz. About 100m before the top you will be atop of a concave wall. There are different possible exits. The reunion spot for the EL BALCÓN DE ANDRÓMEDA climber route has been jumped. 1h - 1:30h.

Material

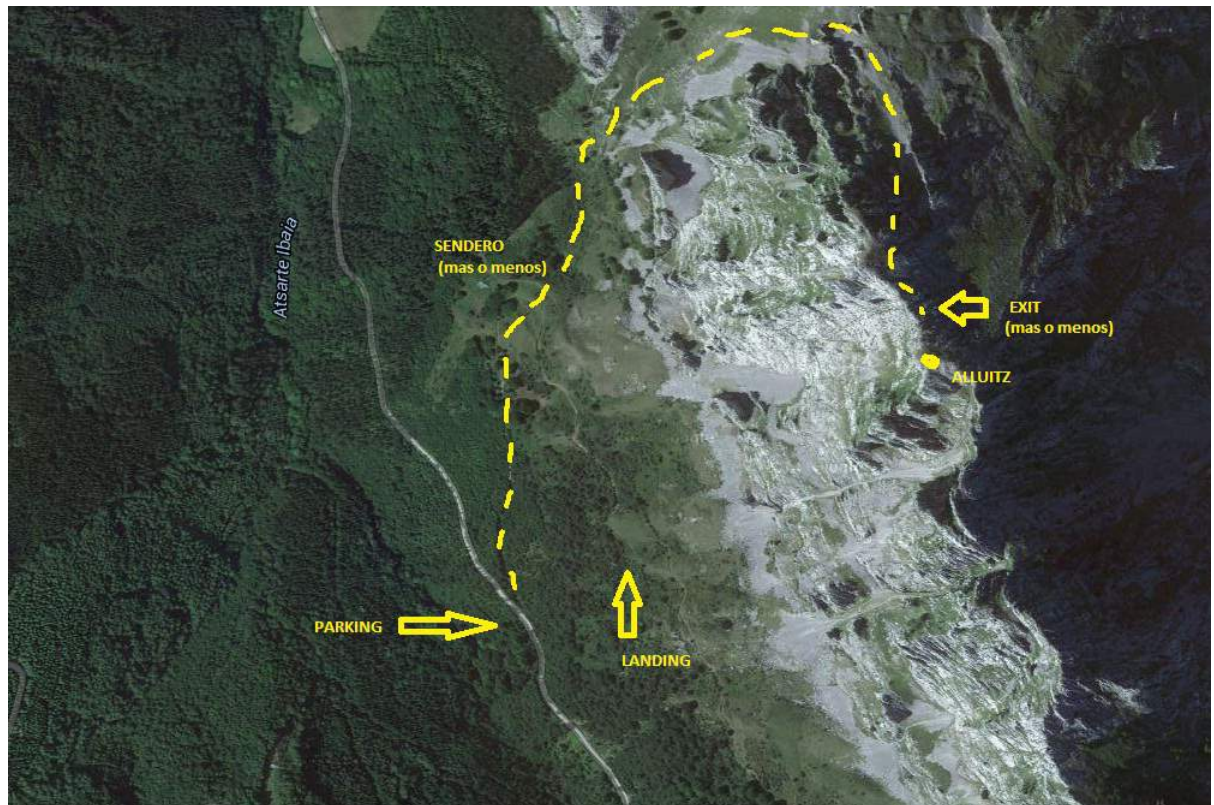
None.

Height

More than 80m (262ft) to impact, although it’s not known for certain (It was measured using an 80m rope that did not reach the ground). It’s about 500m (1640ft) downslope to the landing.

Landing

A field slightly atop “Gurezelai”. It can be seen well from the exit.



Return

Descend to the car, in about 5 minutes.

Observations

Large overhung jump. Large sloped talus. **This jump is located within the Natural Park of Urkiola, where paragliding, hang gliding, or similar sports are prohibited.**



Labargorri

Exit opened by Txirrita in June 2016. The wall is above the Atxarte quarry the quarry the wall is to the left. **Located in the Urkiola Natural Park, where paragliding, hand gliding and similar sports are prohibited.**



Access

From the town of Abadiño, take the route that takes you to Valle de Atxarte. Park in front of the quarry or drive the car to the top of the same quarry.

Approach

From the quarry take the path that leads towards the walls that are atop the quarry. At the first turn, continue on the path that surrounds the walls. Continue the hike until you detour to the left up to the exit point (no trail). 30 minutes.

Material

None.

Height

Approximately 390ft (120m) to impact. The landing slopes down approximately 980ft (300m).

Landing

In the quarry. It is possible to land a canopy next to the road as well.



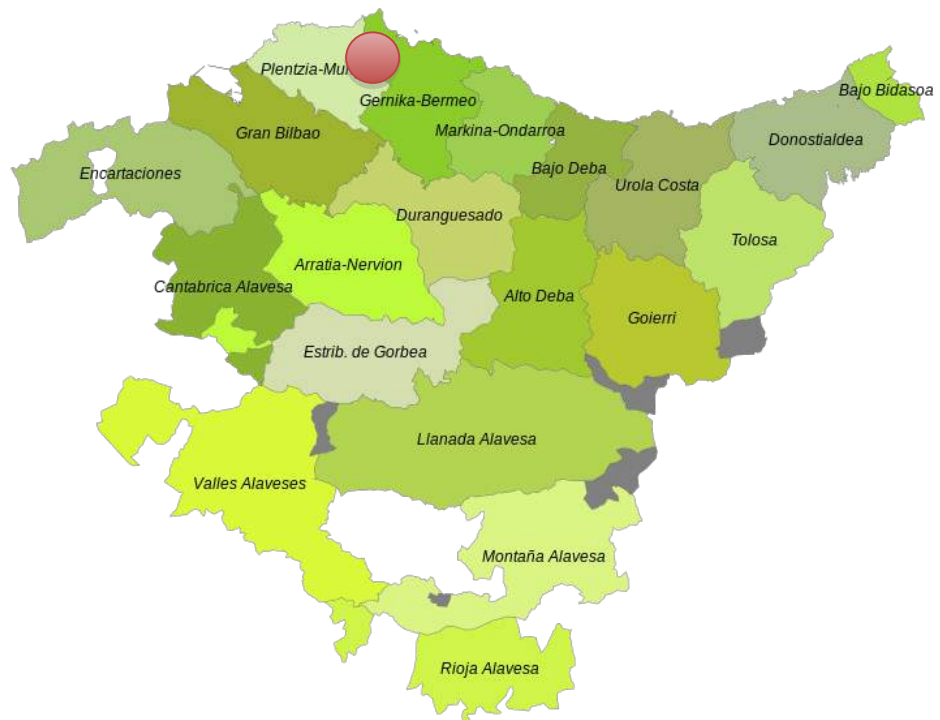
Return

Obvious.

Observations

Jump above the Atxarte quarries. **The wall is located in the Urkiola Natural Park, where paragliding, hand gliding and similar sports are prohibited.**

Iondegorta



5 Segundos

Exit opened by Patrick Guisasola.



Access

From the plaza in Zeanuri, take the road indicated to the Undurraga dam totally surrounding it to the right until you reach an intersection with the sign “Ipiña, Ipiñaburu”. Continue on this road until the next intersection with the sign “Landreabe” where it will quickly take you to the electric central station. You will see it has large green water pipes above it. Drive up on the right side on a narrow steep stretch of road until it ends, you can park the car near the refuge of the Iondegorta dam.

Approach

From Pagomakurre (883m) go up to the fields of Arraba (1073m) which you will cross diagonally. Leaving behind the rocky area of Gatzarrieta (1183m), you arrive at the grassy Aldape pass (1109m), the nest of trails between the pastoral basins of Zastegi, Egiriñao and Aldamiñape. Head towards the large Egiriñao refuge, leaving behind on the left the small ermita de Elurretako ama (Virgen de las Nieves). The trail is a scramble until you get to the marked Aldamiñoste pass (1321m). There is a trail to the left that takes you between rocks and you easily arrive at the top. Shortly before the top, you approach the exit and see the outcropping called “El Gendarme”, which you can reach without difficulty.

Material

None.

Height

Approximately 85m (279ft) to impact and 300-450m (980-1475ft) to possible landing sites.

Landing

There are various fields at various altitudes and directions, but all past the field of rocks that overlay on the talus below the jump. (About 200 meters).

Return

The same way you came.

Observations

Vertical jump.

Sierra de Sálvada



Le Chant du Vautour

Exit opened by Laurent Le Cléach around 1990, in the Nervión valley, south of Bilbao.



Access

From Bilbao, head towards Llodio, to get to Puerto Orduna, and finally arrive at Délika.

Approach

You will see the walls. Ascend the pass going up the middle, and then continue to the right until you reach a post.

Material

None.

Height

Approximately 180m (590ft).

Landing

Obvious.

Return

Obvious.

Observations

?

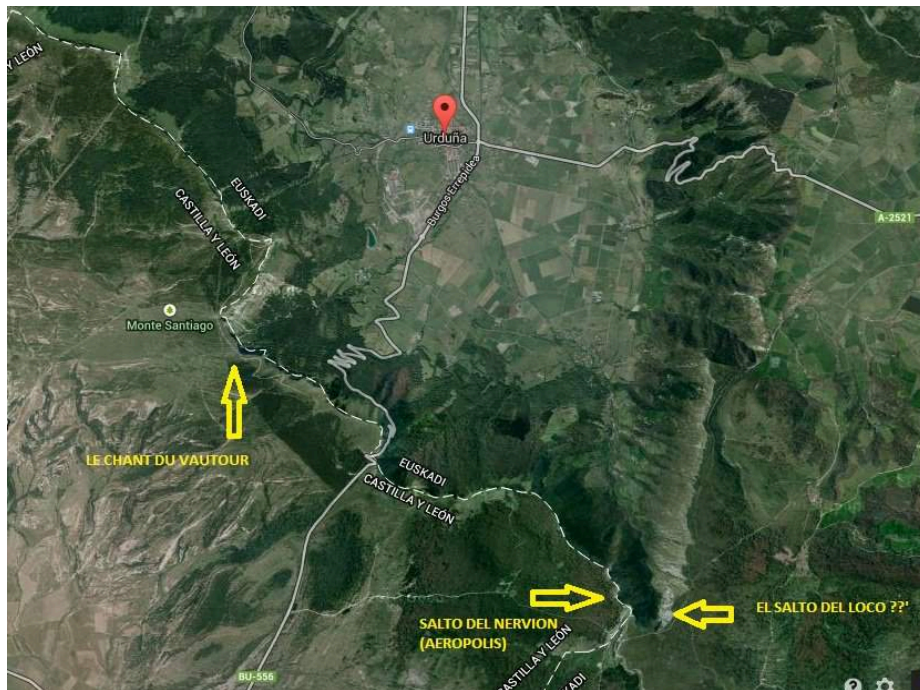
Nervi3n (Aeropolis)

Exit opened by Lauren Le Cleach in 1990 at the border of Burgos and lava next to the port of Ordua, between the Gibijo mountain range and Monte Santiago.



Access

?



Approach

The viewing area.

Material

None.

Height

Approximately 200m (655ft).

Landing

?

Return

?

Observations

?

Salto del Loco (Aeropolis)

Exit opened by Lauren Le Cleach in 1990. No information known.

Access

?

Approach

?

Material

?

Height

?

Landing

?

Return

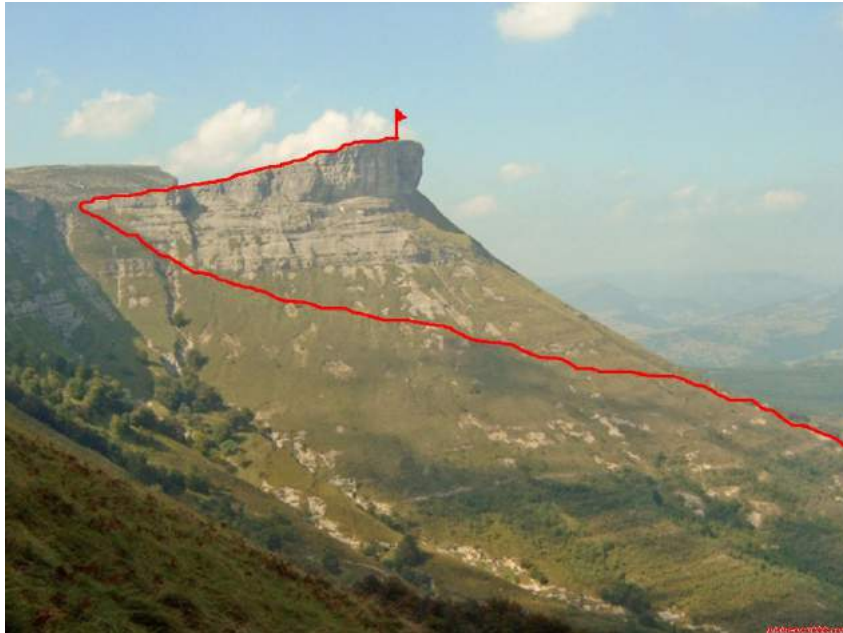
?

Observations

?

Ungino

Exit opened by Juan Ra, Laura and Txirrita, with the help of Pablo on 21 June 2016 in Sierra Salvada, Monte Ungino 3635ft (1108m). Overhung jump. Many possible exits.



Access

You need to get to the town of Madaria. From Amurrio or Orduña.

Approach

Park the car at the entrance to the town of MADARIA next to the church. Take the street up in an easterly direction towards the mountain. The last houses in town take to a rocky trail that ascends the Ungino hills, towards the southwest. Go thru two metal doors, DOOR1 and DOOR2 always ascending towards the most visible face of Ungino. After passing DOOR2 leave the trail and take a lesser used path that looks like a cattle trail that ascends up towards the apron of the mountain. Head slightly to the left and climb about 700m and double back on the mountain to get to the upper apron of the Idas river ravine. It's goes to the entrance of Los Unginos, where you are headed. Soon you will find trail markings all the way up the cattle trail that takes you towards the entrance. Push thru the cattle you find that are warming themselves under a pleasant fall sun. Three hundred meters of crest plains separate you from the UNGINOS ENTRANCE. Summiting the final section will require some effort scrambling. Once past the entrance head to the right and continue about 100 meters up a slope until you get to the UNGINO peak (3635ft - 1108m)



Material

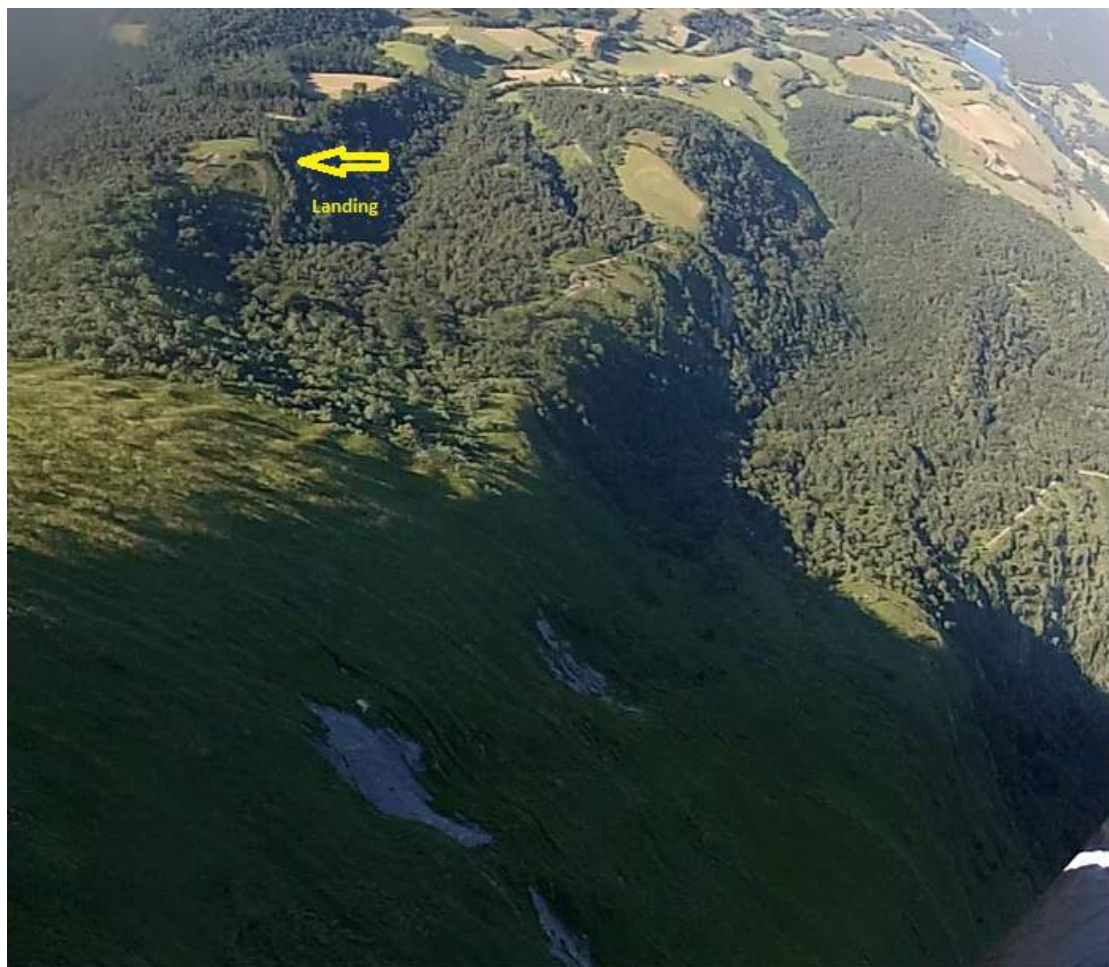
None.

Height

Between 230ft (70m) and 295ft (90m). Depending on the exit point taken.

Landing

There is a good landing next to a forest. In the closest visible field (it looks further and it is). Or the same sloped grassy side visible from the exit.



Return

Find the same path you used to get up to the exit.

Observations

The landing is far. Be cautious of the headwind or tailwind.

Píkaro

Exit opened by Juan Ra andy Pablo Pumuky in November 2015.



Acces

From Amurrio or Orduña to the village of Salmanton, once there, follow the track to the parking.

Approach

From the parking, follow the track to the top. Easy.



Material

Nothing.

Height

Aprox 120m rockdrop.

Landing

Close to the parking.

Return

Nothing.

Observations

There is a bolt at the exit.

Aro Ke Si

Exit opened by Patrick Guisasola and Juan Arenas in August 2015.



Access

The same as Píkaro.

Approach

The same as Píkaro.

Material

None.

Height

Approximately 260ft (80m) to impact.

Landing

?

Return

?

Observations

?

Valencia



Calpe





Ifach Norte

The exit point is on the north side of the Peñon de Ifach, opened by Carlos Suárez and Gabino on October 1, 2006. **This is part of a Natural Park zone and it is illegal to BASE jump anywhere in the park.**



Access

Parking is in the town of Calpe, close to the crag.

Approach

?

Material

None.

Height

Approximately 100 meters (328ft).

Landing

?

Return

?

Observations

Sketchy exit with a tight landing.



Peñón de Ifach

The exit point is on the south side of Peñón de Ifach. **This is part of a Natural Park zone and it is illegal to BASE jump anywhere in the park.**



Access

Parking is in the town of Calpe, close to the crag.

Approach

Go up along the other side of the crag, there is a tourist trail that takes you to the top.

Material

None.

Height

Approximately 270 meters (885ft).

Landing

At the base of the crag there is a coastal access road. Land next to or on the helipad.

Return

Walk along the access road back to the parking lot to the car.

Observations

Overhung exit, but you must gain momentum to clear an outcropping that can give you a little surprise.

Petrer



Cid

Exit opened by Miguel and Gonzalo in August of 2009.



Access

?

Approach

?

Material

?

Height

Approximately 100 meters (328ft).

Landing

?

Return

?

Observations

?

Teulada



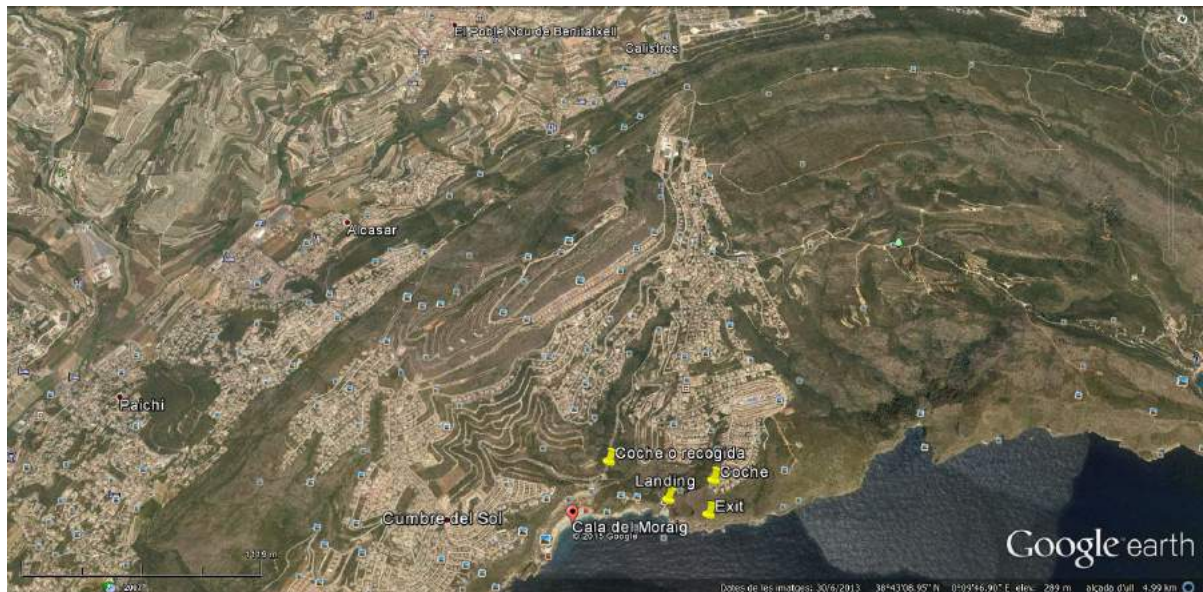
Moraira

Exit opened by Fritz, Toni and Gabino on March 20, 2010.



Access

From Teulada head towards Poble Nou de Benitatxell, pass thru it and head towards the Cumbre del Sol housing development, (2 vehicles or non-jumping driver recommended) With 2 cars, leave one of them before the path that goes down to Cala Moraig. The exit is located towards the high south end of the housing development. Park the car at the end of the street at the trailhead.



Approach

5' follow the path that takes you to the edge of the cliff, the exit is obvious. Short easy climb down, about one meter to a small balcony like structure.



Material

None

Height

Approximately 170 meters (558ft).

Landing

A small cove to the right. (not very big).

Return

From the cove you can scramble up to the housing development with existing rope aides (Barranc de L'infern). About 30'

Observations

Vertical jump over the sea. Recommen (46/48 PH) 1 second delay to not land in the water and make the cove.

Chulilla

COMUNIDAD VALENCIANA



Chulillo

Exit opened by Luis Manzaneda in April 2015.



Access

The jump is located on one of the well known Chulilla climbing school walls.

Approach

The exit is in front of the Refugio El Ático, a bit to the right.

Material

None.

Height

Approximately 80 meters (262ft).

Landing

A small field next to the river.

Return
Obvious

Observations
Exit is obvious

Out of Spain

Jumps opened outside of Spain by members of AESBASE.

France



Biographie

Jump found in the area of Biographie, the well known climbing school of Ceüse. Exit opened by David Fusté in July 2014.



Access

Use the Ceüse climbing school parking lot.

Approach

Take the path used by the climbing school to access the climbing walls. There is a via ferrata to get up to the top.

Material

Via ferrata material.

Height

Approximately 80 meters (262ft).

Landing

At the base of the jump.

Return

The same path you came up.

Observations

Landing is a bit sketchy.

Greece



Corazón de León

Jump located near a town called Leonidio, on the Cave of Panagia wall. Exit opened by Luís Manzaneda and Vassili Theodorou in July 2014.



Access

?

Approach

There is an obvious canal to the left of the wall.

Material

Use a rope to rappel down and look for the exit. It is not obvious.

Height

Approximately 90 meters (295ft).

Landing

The landing is past the road and parallel to the wall in a small field of clovers within an orchard. The road is an option but there is traffic. The field may be dependant on the time of year it's being sowed.

Return

?

Observations

Overhung exit.